



Explosion Proof Submersible Pumps



XP Series

Explosion Proof Submersible Pumps



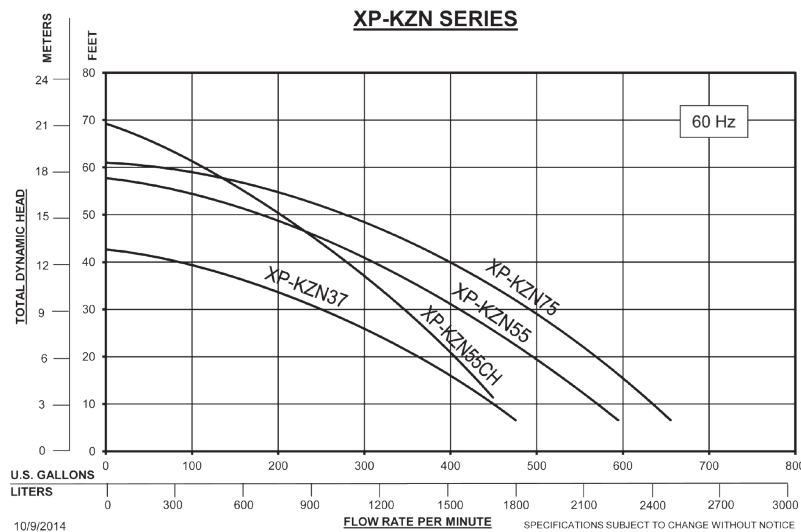
With BJM Pumps® your safety is our highest priority. Our FM-approved explosion proof pumps exceed industry standards. These pumps meet NFPA (70), NEC and OSHA requirements for Class I, Division 1, Groups C & D hazardous locations. We offer a range of explosion proof slurry, solids handling and corrosion-resistant pumps specifically designed and constructed for durability so you save money on maintenance, repair, and replacement costs. Learn more at www.flowsolutions.com or call 860-631-3618.

XP-KZN Series - Explosion Proof Slurry Pumps

The XP-KZN Series pumps are hard metal slurry pumps designed for operation in Class I, Division 1, Group C & D hazardous environments. It's engineered specifically for the tough applications you deal with in mining/coal mining, hydraulic fracking, mineral processing, steel production, drilling mud transfer, slurry transfer, sand and gravel, lime slurry or fly ash.

Features

- FM-approved explosion proof motor meets NFPA (70), NEC and OSHA requirements for Class I, Division 1, Group C & D hazardous locations
- 28% chrome iron agitator, wear plate and impeller to handle the most abrasive slurries
- Top discharge, slim line design for additional motor cooling
- Oil-lubricated, double mechanical seal design featuring early warning seal failure protection circuit to ensure the longest pump and motor life
- Class H motor insulation with integral amperage (FLA) and temperature overload protection
- Hardened ductile iron volute with 300 Brinell hardness for twice the abrasion resistance as standard ductile iron



High Chrome Iron Agitator jets settled solids into suspension and moves heavy slurries.

XP-KZN37	3"	5	230/460/575	17/8.5/6.8	7/8"	42'	475	32"	16"	395
XP-KZN55	4"	7.5	230/460/575	19.5/9.5/7.8	1"	57'	594	32"	16"	415
XP-KZN55CH	3"	7.5	230/460/575	19.5/9.5/7.8	1"	69'	449	32"	16.25"	440
XP-KZN75	4"	10	460/575	13/10.5	1"	61'	655	33"	16"	440

10/9/2014

FLOW RATE PER MINUTE

SPECIFICATIONS SUBJECT TO CHANGE WITHOUT NOTICE

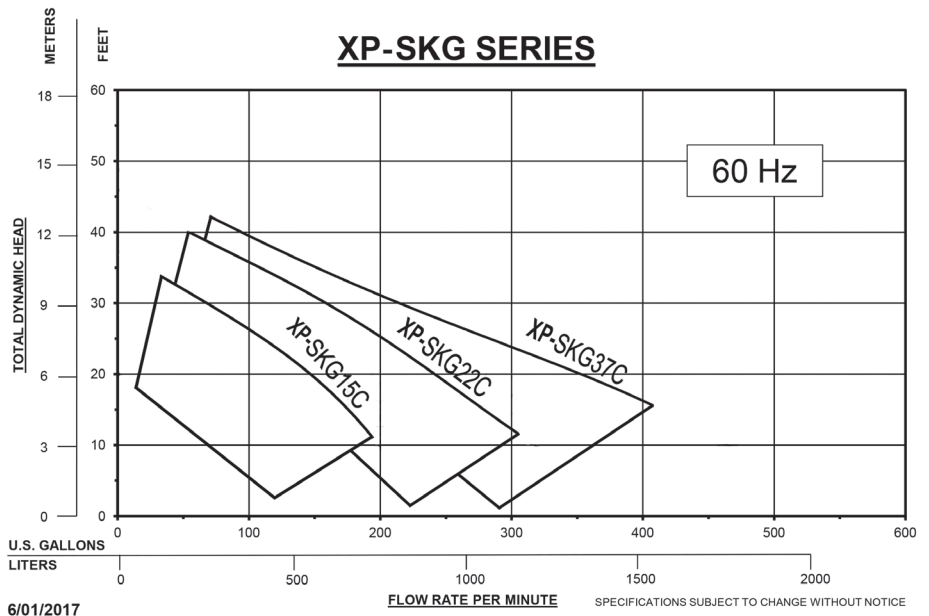
XP-SKG Series - Explosion Proof Solids Handling Pumps

Solve your toughest solids handling submersible pump challenges with BJM Pumps® patented RAD-AX® Dual Shredding Technology. The XP-SKG Series pumps obliterate flushable wipes and other difficult solids in wastewater application. Get optimal performance, longer service, and save repair, labor and replacement costs. Perfect for distilleries, airports, prisons, campgrounds, bottling plants, battery recycling and food processing plants.

Features

- FM-approved explosion proof motor for use in Class I, Division 1, Groups C & D hazardous locations (temp. code T4)
- RAD-AX® Dual Shredding Technology to shred flushable wipes and other difficult solids with hardened 440C stainless steel cutting elements
- Oil-lubricated, double mechanical seal design featuring early warning seal failure protection circuit to ensure the longest pump and motor life
- Superior motor protection with NEMA Class F winding insulation and thermal sensor switches embedded in the motor windings to provide thermal and over-ampereage motor protection
- Durable heavy duty SOOW power and sensor cables suitable for operating in demanding industrial locations

DUAL SHREDDING RAD-AX® TECHNOLOGY



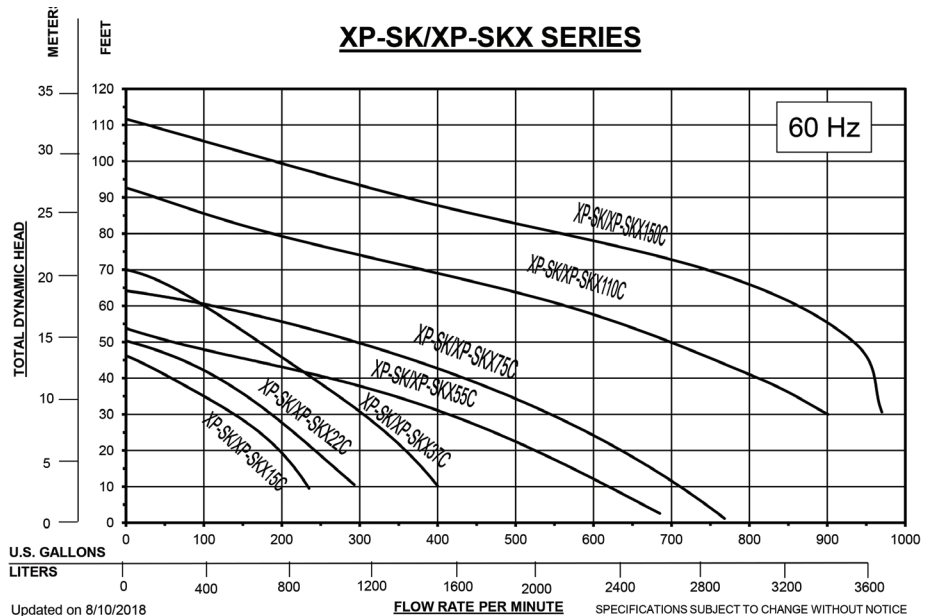
XP-SKG15C	3"	5	230/460/575	6.2/3.1/2.5	34'	190	33"	21"	200
XP-SKG22C	4"	7.5	230/460/575	19.5/9.5/7.8	41'	300	33"	21"	200
XP-SKG37C	3"	7.5	230/460/575	19.5/9.5/7.8	42'	410	34"	21.5"	225

XP-SK Series & XP-SKX Series - Explosion Proof Shredder Pumps

The XP-SK and XP-SKX pumps meet NFPA (70), NEC and OSHA requirements for Class I, Division 1, Groups C & D hazardous locations (temp. code T4). BJM Pumps® Tungsten Carbide Tip impeller rips solids apart with 360-degree shredding action for easier passage and virtually no clogs. Appropriate applications include chemical plants, municipal wastewater, manure washdown, leachate and commercial wastewater.

Features

- XP-SK offers a ductile iron impeller and wear plate with cast iron volute
- XP-SKX Series constructed of cast 316 stainless steel
- FM-approved explosion proof motor for use in Class I, Division 1, Groups C & D hazardous locations
- Oil-lubricated, double mechanical seal design featuring early warning seal failure protection circuit to ensure the longest pump and motor life
- Superior motor protection with NEMA Class F winding insulation and thermal sensor switches embedded in motor windings to provide both thermal and over amperage motor protection
- Durable, hardened cast iron construction to handle pumping sandy water and operating in harsh construction environments



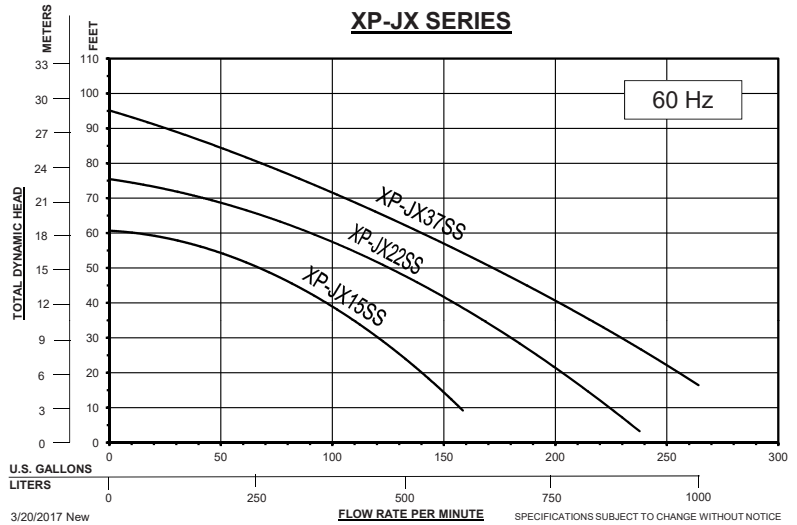
XP-SK15C/ XP-SK15CSS	3" NPT-M	2	208/230/460/575	6.6/6.2/3.1/2.5	1.6"	42'	220	29.5"	14.75"	160
XP-SK22C/ XP-SK22CSS	3" NPT-M	2	208/230/460/575	9.4/8.9/4.5/3.6	1.6"	45'	270	29.75"	15.25"	170
XP-SK37C/ XP-SKX37CSS	3" NPT-M	5	208/230/460/575	15/13.9/7/5.6	1.6"	62'	360	31"	15.25"	180
XP-SK55C/ XP-SKX55CSS	4" NPT-F	7.5	208/230/460/575	21/19.4/9.7/7.8	3.5"	54'	570	43.5"	29.5"	400
XP-SK75C/ XP-SKX75CSS	4" NPT-F	10	460/575	12.6/10	3.5"	64'	670	43.5"	29.5"	420
XP-SK110C/ XP-SKX110CSS	4" NPT-F	15	460/575	17.5/14.9	3.5"	92'	870	48.5"	35.15"	580
XP-SK150C/ XPSKX150CSS	4" NPT-F	20	460/575	24/19.2	3.5"	110'	900	57"	35.15"	775

XP-JX Series - 316 Stainless Steel Explosion Proof Effluent Pumps

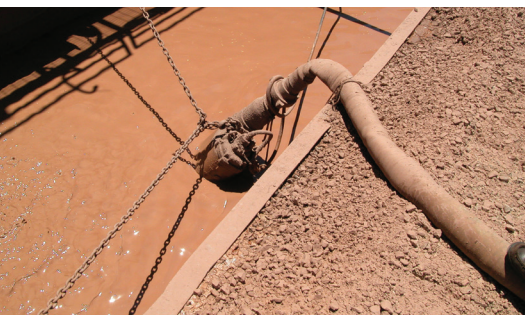
The XP-JX pumps meet NFPA (70), NEC and OSHA requirements for Class I, Division 1, Groups C & D hazardous locations (temp. code T4) and are designed for general pumping. These pumps work well for effluent dewatering, corrosive sumps, bottling plants, metal finishing, leachate recovery and more. The XP-JX Series offers higher flow while the XP-JXH Series is available for a higher head option.

Features

- Constructed of 316 stainless steel, including the impeller and wear plate, to stand up to corrosive materials
- Oil-lubricated, double mechanical seal design featuring early warning seal failure protection circuit to ensure the longest pump and motor life
- Superior motor protection with NEMA Class F winding insulation and thermal sensor switches embedded in the motor windings to provide thermal and over-amperage motor protection
- Durable heavy duty SOOW power and sensor cables suitable for operating in demanding industrial locations



XP-JX15SS/ XP-JX15HSS	2" NPT-F	2	208/230/460/575	6.6/6.2/3.1/2.5	3/16"	27.25"	12.4"	157
XP-JX22SS/ XP-JX22HSS	2" NPT-F	3	208/230/460/575	9.4/8.9/4.5/3.6	3/8"	28.7"	12.9"	166
XP-JX37SS/ XP-JX37HSS	2" NPT-F	5	208/230/460/575	15/13.9/7/5.6	3/8"	28.7"	12.9"	178



SPECIFICATIONS SUBJECT TO CHANGE WITHOUT NOTICE



INDUSTRIAL
FLOW
SOLUTIONS™

104 John W Murphy Drive
New Haven, CT 06513
Tel: (860) 631-3618
Fax: (860) 399-7784
Web: www.flowsolutions.com

Distributor: