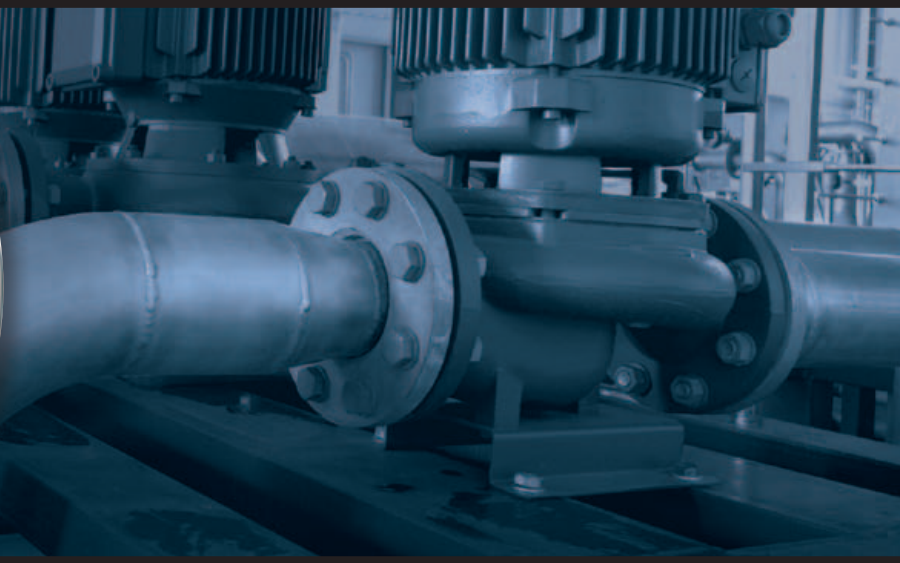
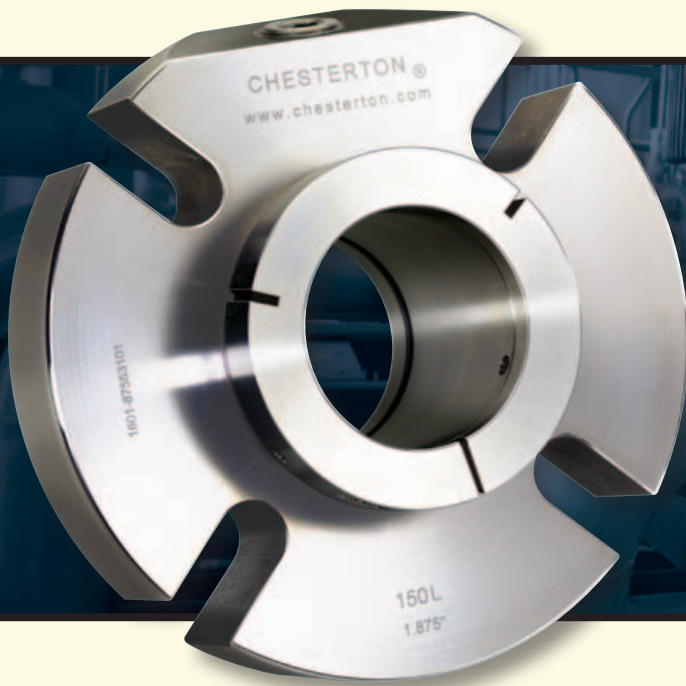


# 150L

## CARTRIDGE SINGLE SEAL



### Advantages

- No removable centering devices—simplifies seal installation and equipment maintenance
- Single clamping screw outside of the process fluid—one screw to install the seal simplifies removal in sticky or viscous fluids
- Uses the Chesterton 150 Seal technology for maximum reliability and reduced inventory requirements
- Integral bushing for added integrity and protection
- Fits common ANSI/ISO and vertical pumps
- Quench and drain design available as an option
- Cartridge design for easy and reliable installation

### Simple, innovative, reliable sealing

The Chesterton® 150L Cartridge Single Seal is an innovative design based on the reliable Chesterton 150 Seal and incorporates all the features of the 150. In addition, the 150L Seal utilizes a unique self-centering design that eliminates the centering mechanisms that must be removed prior to equipment startup or installed for impeller adjustments after startup. This simplifies seal installation by eliminating centering device removal as well as the need to save these items for future use.

The seal also uses a lock ring with one clamping screw that uniformly clamps the seal to the shaft without the need for multiple set screws. This concept helps to prevent fluids from gumming up or clogging the set screws, which would make seal removal or disassembly difficult. The one, larger clamping screw is positioned out of the process fluid, making it easier to disassemble.

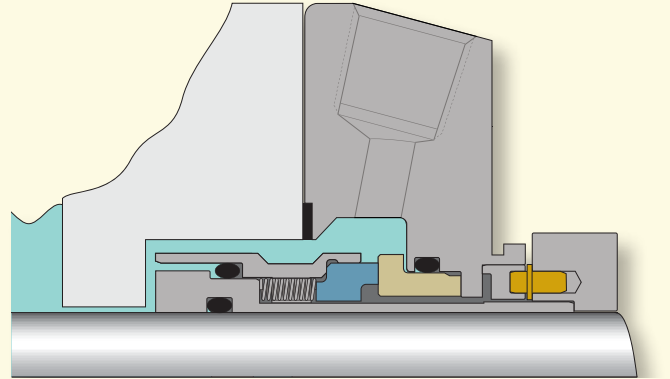
Component commonality between the 150 and 150L seals has been engineered for maximum flexibility and economy.

# 150L CARTRIDGE SINGLE SEAL

SIMPLE, INNOVATIVE, RELIABLE SEALING

## Features

- Unique internal centering bushing eliminates the need for removable centering devices
- Single screw lock ring uniformly clamps the seal to the shaft and simplifies removal in fluids that tend to set or clog around the seal
- Gland annulus allows more process fluid at the seal interface for greater cooling capabilities
- Heavy-duty drive lugs reduce fatigue and handle higher startup torque
- Optimized seal face design to improve face lubricity and extend seal life



## Operating Parameters

<b>Pressure*</b>	20 bar g (300 psig)
<b>Temperature</b>	To 205°C (400°F)
<b>Speed</b>	To 25 m/s (5,000 fpm)
<b>Size</b>	25 mm (1.00") to 120 mm (4.75")

## Materials of Construction

<b>Component</b>	Standard Materials
<b>Rotary Face</b>	Carbon, Silicon Carbide, Tungsten Carbide
<b>Stationary Face</b>	Silicon Carbide, Tungsten Carbide
<b>Elastomers</b>	EPDM FEPM FKM
<b>Spring</b>	Alloy C – 276 (EN 2.4819)
<b>Metal Parts</b>	316 Stainless Steel (EN 1.4401)

\* Seal pressure capabilities are dependent on the fluid sealed, temperature, speed, and seal face combinations. Consult Chesterton Engineering for additional material options, applications exceeding published operating parameters, and for additional seal sizes

Chesterton ISO certificates available on [www.chesterton.com/corporate/iso](http://www.chesterton.com/corporate/iso)

Technical data reflects results of laboratory tests and is intended to indicate general characteristics only.

A.W. CHESTERTON COMPANY DISCLAIMS ALL WARRANTIES EXPRESSED, OR IMPLIED, INCLUDING WARRANTIES OF MERCHANTABILITY AND FITNESS FOR A PARTICULAR PURPOSE OR USE. LIABILITY, IF ANY, IS LIMITED TO PRODUCT REPLACEMENT ONLY. ANY IMAGES CONTAINED HEREIN ARE FOR GENERAL ILLUSTRATIVE OR AESTHETIC PURPOSES ONLY AND ARE NOT INTENDED TO CONVEY ANY INSTRUCTIONAL, SAFETY, HANDLING OR USAGE INFORMATION OR ADVICE RESPECTING ANY PRODUCT OR EQUIPMENT. PLEASE REFER TO RELEVANT MATERIAL SAFETY DATA SHEETS, PRODUCT DATA SHEETS AND/OR PRODUCT LABELS FOR SAFE USE, STORAGE, HANDLING, AND DISPOSAL OF PRODUCTS, OR CONSULT WITH YOUR LOCAL CHESTERTON SALES REPRESENTATIVE.



860 Salem Street  
Groveland, MA 01834 USA  
Telephone: 781-438-7000  
Fax: 978-469-6528  
[www.chesterton.com](http://www.chesterton.com)

© A.W. Chesterton Company, 2012. All rights reserved.  
® Registered trademark owned and licensed by A.W. Chesterton Company  
in USA and other countries, unless otherwise noted.

DISTRIBUTED BY:

FORM NO. EN22882

PRINTED IN USA 10/12