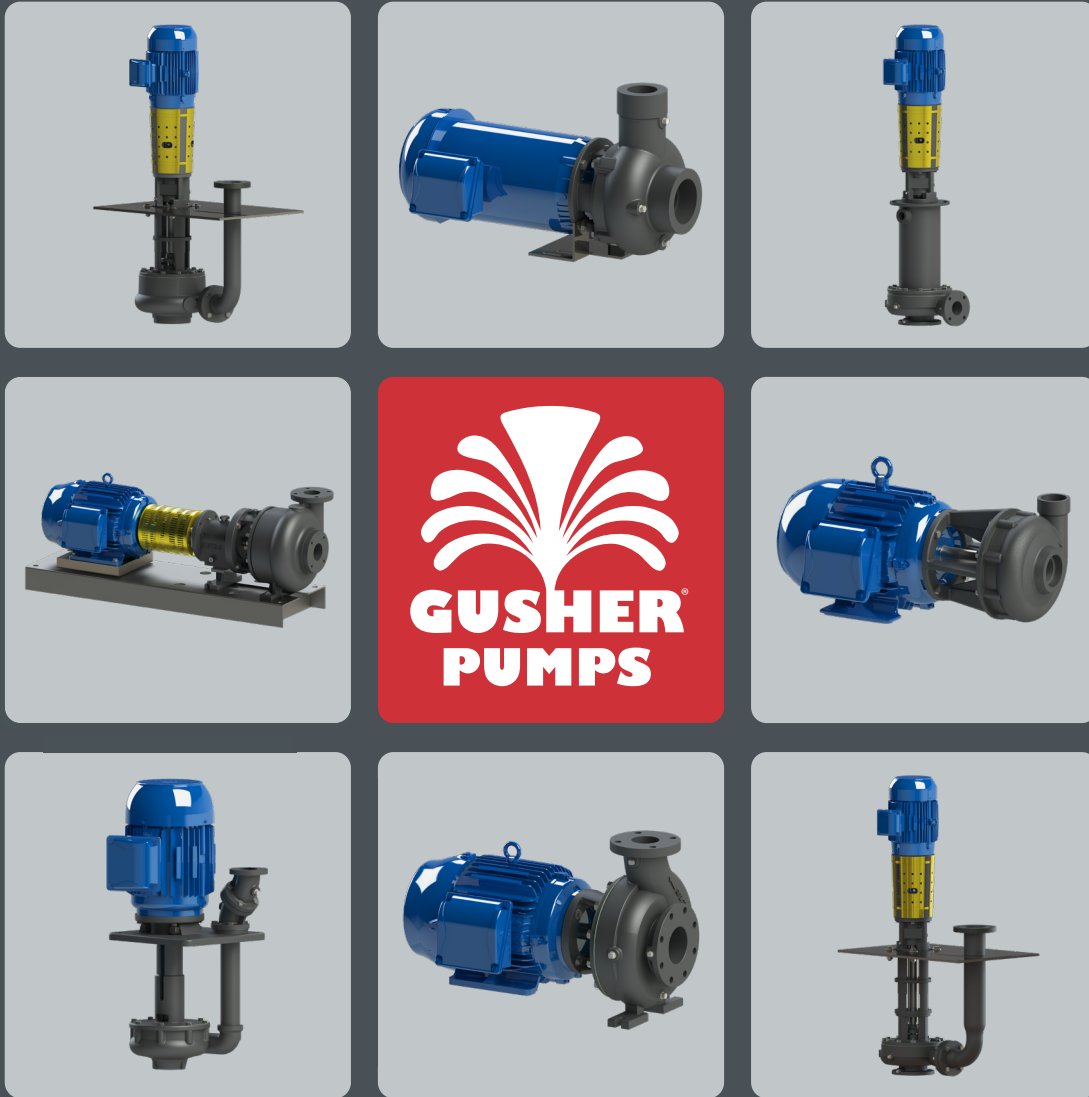


Industrial & Coolant Pumps



Product Selection Guide

7550 Series Vertical

Features

- Capacities up to 4,000 gpm
- Pressures up to 400' TDH
- Heavy-duty bearings
- Iron or 316 stainless steel construction standard; other alloys available
- No mechanical seal required
- Automatic coupling alignment
- Available in extended lengths
- Enclosed column design option

Key Applications

Sump installations; Chemical process; Filtration; Industrial spray washers; Paint systems



7600 Series Vertical

Features

- Capacities up to 4,000 gpm
- Pressures up to 400' TDH
- Heavy-duty bearings
- Ductile iron or 316 stainless steel construction standard
- No mechanical seal required
- Automatic coupling alignment
- Available in extended lengths
- Top pullout design

Key Applications

Chemical process; Filtration; Industrial spray washers; Paint systems



Vortex Series Vertical & Horizontal

Features

- Capacities up to 2,700 gpm
- Pressures up to 440' TDH
- Heavy solids handling capability
- Durable CD4 impeller standard
- Ductile iron or 316 stainless steel construction standard; other alloys available
- Top pullout option on vertical models

Key Applications

Agriculture; Fibrous waste; Paper pulp; Sludge, shavings and swarf



7800 Series Vertical & Horizontal

Features

- Capacities up to 400 gpm
- Pressures up to 180' TDH
- Cast iron or 316 stainless steel construction standard; other alloys available
- Run dry capability
- One-piece shaft
- Available in extended lengths
- Vertical models available with above the plate discharge (AVD model)
- Enclosed column design option on vertical models

Key Applications

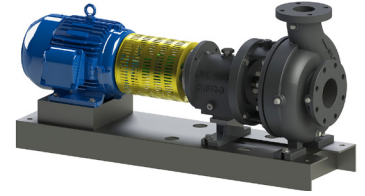
Cooling equipment; Dynos; Wastewater; Water purification



7071 Series ANSI Horizontal

Features

- Capacities up to 5,000 gpm
- Pressures up to 700' TDH
- Heavy-duty shaft and bearings
- Renewable shaft sleeve
- Ductile iron or 316 stainless steel construction standard; other alloys available
- External impeller adjustment
- Cast iron bases available



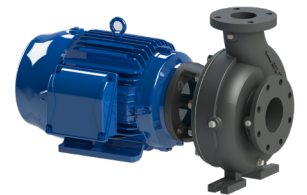
Key Applications

Oil processes; Paper pulp; Wastewater; Water purification; Municipal systems; Filtration; Paint systems

CL-CC Series Horizontal

Features

- Capacities up to 5,000 gpm
- Pressures up to 700' TDH
- Ductile iron or 316 stainless steel construction standard; other alloys available
- NEMA JP shaft motor
- Close-coupled design



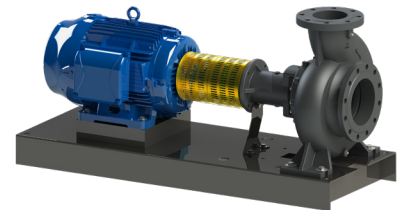
Key Applications

Batch processing; Boiler circulation; Transfer systems; Cooling equipment; Dynos; Amusement parks

DIN Series Horizontal

Features

- Capacities up to 2,400 gpm
- Pressures up to 330' TDH
- DIN mounting flanges
- Heavy-duty shaft and bearings
- Renewable shaft sleeve
- Cast iron or 316 stainless steel construction standard; other alloys available



Key Applications

Oil processes; Paper pulp; Filtration; Municipal systems; Paint systems; Wastewater; Water purification

SC-CC Series Horizontal

Features

- Capacities up to 400 gpm
- Pressures up to 180' TDH
- Cast iron or 316 stainless steel construction standard
- Close-coupled design



Key Applications

Amusement parks; Cooling equipment; Industrial spray washers; Transfer systems; Water purification

Multi-Stage Vertical & Horizontal

Features

- Capacities up to 60 gpm
- Pressures up to 400 psi
- Built-in mounting flange with above the plate discharge
- Multiple mechanical seal material options available
- Cast iron or 316 stainless steel construction standard; other alloys available

Key Applications

Machine tool coolant systems



Ruthman Series Vertical & Horizontal

Features

- Capacities up to 650 gpm
- Pressures up to 160' TDH
- Cast iron construction standard; 316 stainless steel available
- Immersed and flange mounted styles
- Dry running capabilities on most models

Key Applications

Oil processes; Machine tool coolant systems; Sludge, shavings and swarf; Transfer systems



Molten Metal Series Vertical

Features

- Handles liquids at temperatures up to 1200° F
- Furnished with F or H insulated motor
- Electric or air driven models
- Fan-cooled with water jacketed bearing housing available
- Ductile iron or 316 stainless steel construction standard

Key Applications

Molten metals (Lead, Babbitt, Magnesium)



8000 & SPP Series Self-Priming Horizontal

Unique Features

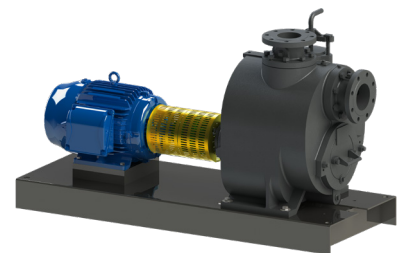
- 8000 Series for general service
 - Capacities up to 1,200 gpm
 - Pressures up to 130' TDH
- SPP Series for solids handling
 - Capacities up to 4,000 gpm
 - Pressures up to 170' TDH

Shared Features

- Long- and close-coupled models
- Cleanout ports standard
- Ductile iron or 316 stainless steel construction standard
- Suction lift up to 20 feet

Key Applications

Agricultural; Amusement parks; Transfer systems; Wastewater; Water purification



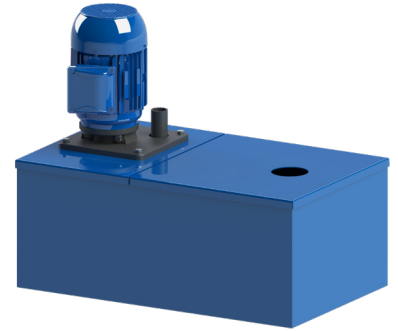
Machine Tool Tank Units

Features

- Compatible with a wide range of Gusher pump designs
- Accepts single stage and multistage pumps
- Optional casters
- Easy to remove chip baskets and baffles
- Standard sizes range from 4-200 gallons, with customization available

Key Applications

Machine tool coolant systems



Enclosed Column Design Option

Are Enclosed Column Pumps Right for You?

- Available on 7550 Series and 7800 Series vertical pumps
- Sealless design eliminates potential for mechanical seal failure
- Column contains any incidental overflow for return to the process or discharge
- Ideal for external tank mounting
- Easily retrofitted to existing horizontal pump installations



Gusher Pump Facts

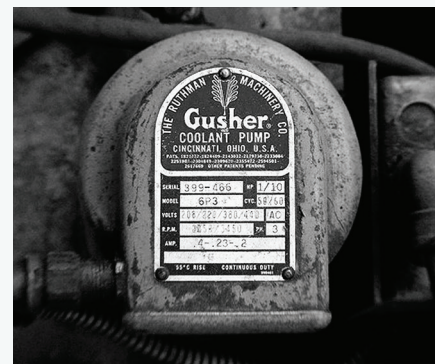
- One of the largest suppliers of custom centrifugal pumps, ranging from 1/25 hp – 250 hp and 5,000 gpm
- A wide array of pump designs: vertical sump, horizontal close-coupled, basemount, self-priming, multistage, ANSI, DIN, vortex and molten metal
- Engineering expertise to modify any of our standard models to meet application needs
- Ability to handle a wide variety of fluids, from clean water to molten metals
- Global footprint for fast shipment around the world

A Wide Range of Pump Applications

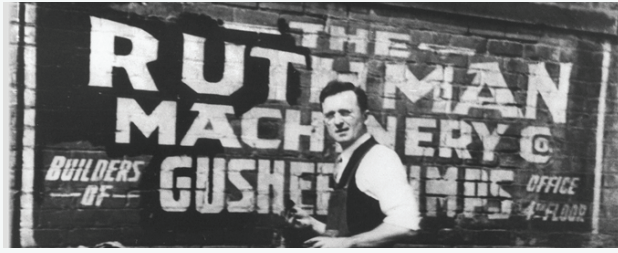
Agriculture, Amusement parks; Batch processing; Boiler circulation; Chemical process; Cooling systems; Dynos; Fibrous waste; Filtration systems; Industrial washing machines; Industrial spray washers; Machine tool coolant systems; Molten metals (Lead, Babbitt, Magnesium); Municipal systems; Oil processes; Paint/Ecoat systems; Paper pulp; Phosphate systems; Sludge, shavings and swarf; Transfer systems; Wastewater; Water purification

We Serve...

American Airlines, Anheuser-Busch, Black and Decker, Bausch and Lomb, Boeing, Borg-Warner, Briggs Stratton, BMW, Caterpillar Tractor, Cincinnati Machine, Detroit Diesel, Clarklift Trucks, Dana Corporation, Harley-Davidson, John Deere, Delco-Delphi, E.I. Dupont, Federal Mogul, Ford Motor Company, General Electric, General Motors, Hitachi, Lockheed Martin, Mack Trucks, Maytag, Mazak, Parker Hannifin, Polaris, Reliance Electric, Rockwell International, Sandvik, A.O. Smith, Snap On Tools, Tesla, Toyota, Westinghouse and many others.



Ruthman Companies: A family-owned business supplying pumps for over 100 years



Ruthman Companies was co-founded in 1912 by brothers Alois and Edward Ruthman as the "Ruthman Machinery Company." Based in Cincinnati, the company serviced the steamboats that traveled the Ohio River. In 1924, Alois conceived the first seal-less centrifugal pump, coining the term 'coolant pump.' The brothers named this new pump "Gusher," giving birth to what is now Ruthman Companies' flagship brand, Gusher Pumps.

Alois' son Thomas R. Ruthman joined the family business in 1949, growing the business globally through organic growth and the acquisition of complementary technologies. In the early 1990's, Alois' grandson, Thomas G. Ruthman, became the third generation of Ruthmans in the pump business. Over the years, Ruthman Companies has expanded its product line from the original centrifugal coolant pumps to include valves, vertical turbine pumps, positive displacement pumps, gear pumps, and other specialized pump equipment, while upholding its reputation as a leader in the custom engineering of pumps for the most challenging applications.

GUSHER PUMPS LOCATIONS

Williamstown Headquarters

115 Industrial Road
Williamstown, KY 41097
Phone: 859.824.3011
Email: Info@Gusher.com
www.Gusher.com

Dry Ridge Manufacturing

22 Ruthman Drive
Dry Ridge, KY 41035
Phone: 859.824.5001
Email: Info@Gusher.com

Dry Ridge Training Facility

3565 Dixie Highway
Dry Ridge, KY 41035
Phone: 859.824.5001
Email: Info@Gusher.com

New Castle Sales & Service

403 North Ninth Street
New Castle, IN 47362
Phone: 765.529.5624
Email: GusherNC@Gusher.com

Gusher Pumps, Shanghai

655 Caosheng Road
Jiading District
Shanghai, China 201808
Phone: +86 (021) 55151993
Email: Flomo@Gusher.com

RUTHMAN COMPANIES MANUFACTURING DIVISIONS

BSM Pump Corp.

260 Narragansett Park Drive
East Providence, RI 02916
Phone: 401.471.6350
Email: Sales@BSMPump.com
www.BSMPump.com

Fulflo Hydraulic Valves

459 East Fancy Street
Blanchester, OH 45107
Phone: 937.783.2411
Email: Info@Fulflo.com
www.Fulflo.com

Nagle Pumps

1249 Center Avenue
Chicago Heights, IL 60411
Phone: 708.754.2940
www.NaglePumps.com

Process Systems Inc. Headquarters

23601 Pinewood Street
Warren, MI 48091
Phone: 586.757.5711
Email: Sales@PSI4Pumps.com
www.PSI4Pumps.com

Process Systems Inc. Midwest Service

485 N. State Route 341 South
Mellott, IN 47958
Phone: 765.295.2206
Email: Sales@PSI4Pumps.com
www.PSI4Pumps.com

RAE Pumps

1212 Steng Street
Cincinnati, OH 45223
Phone: 513.779.3034
Email: Info@RAEPumps.com
www.RAEPumps.com

Ruthman Pumps & Service

1212 Steng Street
Cincinnati, OH 45223
Phone: 513.559.3546
www.RuthmanCompanies.com

Ruthmann Pumpen, LLC

Thomas-Edison-Str. 11
D-52499 Baesweiler
Germany
Phone: +49 (0) 2401 80489-0
Email: Info@RuthmannPumpen.de
www.RuthmannPumpen.de

RUTHMAN COMPANIES HEADQUARTERS

7236 Tylers Corner Drive
West Chester, OH 45069
Phone: 513.559.1901
www.RuthmanCompanies.com

