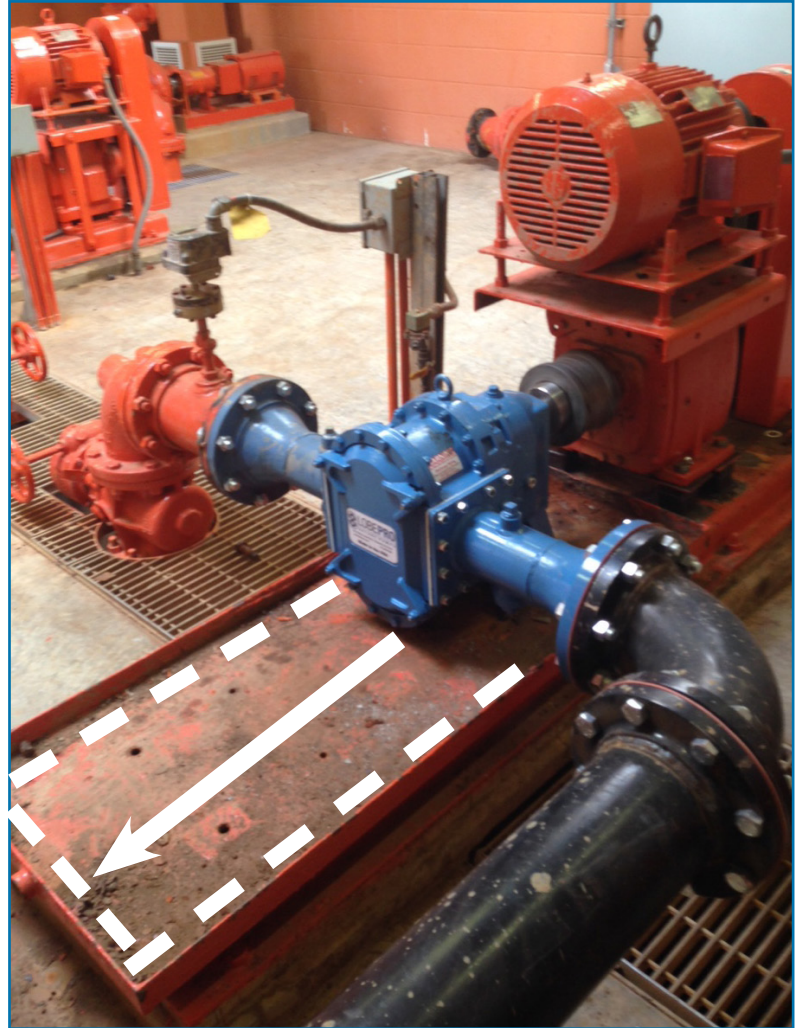


LobePro vs. PC Pumps

LobePro pumps handle the same jobs as well or better than progressive cavity (screw) pumps up to 150 psi of pressure and have the following advantages:

- Require approximately 1/3 their physical space
- Because they are 1/3 the size:
 - Parts are typically 1/3 the cost
 - Maintenance labor time is 1/3 or less
 - Lifetime ownership cost is 1/3
- Ability to run dry for a period of time
- Maintenance in place. LobePro lobes, seals and wear plates can be replaced without removing attached piping or pump.
- No Ragging. The PC pump's screwing motion causes the pump to clog or rag. LobePro pumps very seldom clog.



LobePro pump mounted on a progressing cavity pump base. Note the additional space remaining on the base. (Shown with border)

"I love this LobePro pump. It takes three guys three days to rebuild our PC pump. It took three hours to rebuild the LobePro and I did it myself. I can't wait until we replace the other PC pumps with LobePro."

- WWTP Lead Mechanic



LOBEPRO
ROTARY PUMPS

2610 Sidney Lanier Drive
Brunswick, Georgia 31525
1-888-997-PUMP Toll Free
(912) 466-0304 Telephone
(912) 466-0086 Fax
www.lobepro.com

Experience Positive Performance | www.lobepro.com | 888-997-PUMP