

NO SHAFT SEAL,
LESS PROBLEMS

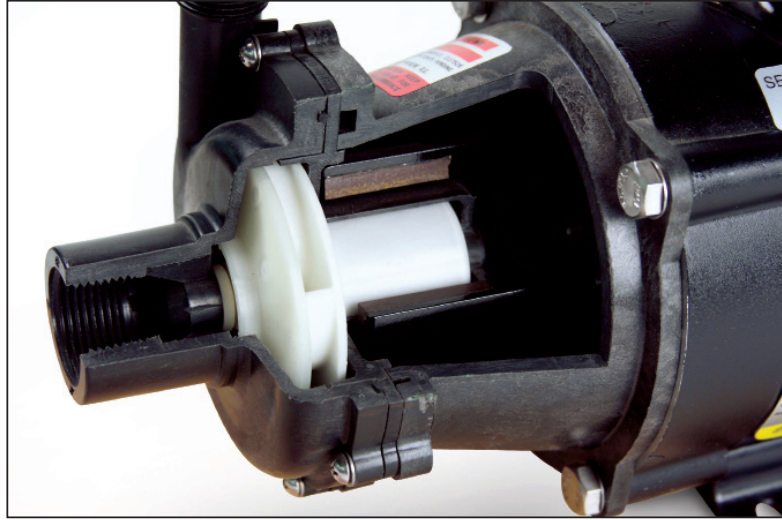


UP TO 200GPM
AND 160 FEET

MARCH PUMPS

CENTRIFUGAL MAGNETIC DRIVE PUMPS





Why A Magnetic Drive Pump

A magnetic drive pump is sealless, preventing any leakage that is normally associated with a conventional seal pump. Not only does the absence of a seal prevent the leakage of potentially dangerous and expensive liquids, it reduces maintenance time spent on the pump. In any magnetic drive pump, there are only two moving parts, the drive magnet and the impeller. With only two moving parts, there is little to break in the pump. The simpler the pump, the less chance there is for failure. A magnetic drive pump is your answer to for a long lasting, dependable, reliable pump.

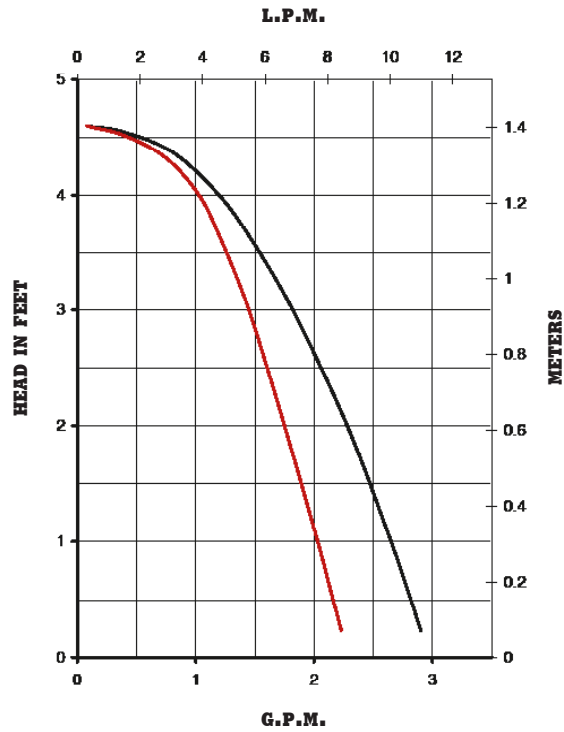
Specialized Chemicals

Hot Water	Hydrogen Peroxide
Salt Water	Magnesium Hydroxide
DI Water	Nitric Acid
Acetic Acid	Phosphoric Acid
Ammonium Hydroxide	Photographic Developers
Chlorine	Plating Solutions
Citric Acid	Potassium Hydroxide
Chromic Acid	Potassium Permanganate
Ethylene Glycol	Sodium Hydroxide (Caustic)
Ferric Chloride	Sodium Chloride
Fluosilicic Acid	Sodium Hypochlorite
Formaldehyde	Sodium Permanganate
Hot Wort	Nickel Sulfate
Hot Oil	Sulfuric Acid
Hydrochloric Acid (Muratic)	
Hydrofluoric Acid	

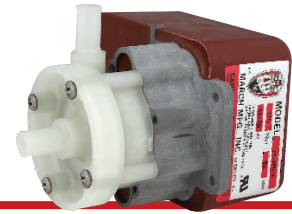
Special Applications

- Aquariums
- Beverage Dispensing Equipment
- Chemical Transfer
- Computer Cooling
- Degreaser
- Desalination
- Electrostatic Coating
- Fryers
- Heat Transfer
- Home Brewing
- Hospital Thermal Blankets
- Ice Makers/Flakers
- Kidney Dialysis
- Marine Air Conditioning Systems
- Microchip Manufacturing
- Refrigeration Systems
- Scrubber Systems
- Solar Systems
- X-Ray Machine Cooling
- Waste Water Treatment





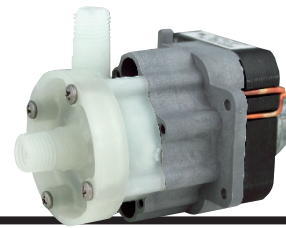
MODEL 1A-MD-3/8



MODEL AC-1A-MD-1/2



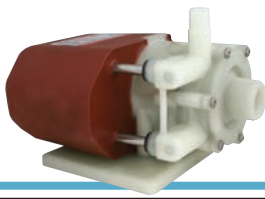
MODEL AC-1A-MD



SERIES 1

SERIES 1	AC-1A-MD-3/8	AC-1A-MD-1/2	AC-1C-MD	1A-MD-3/8	1A-MD-1/2	1C-MD	1U-MD
Max Flow	2.3GPM (8.7LPM)	3GPM (9LPM)	3GPM (9LPM)	2.3GPM (8.7LPM)	3GPM (9LPM)	3GPM (9LPM)	3GPM (9LPM)
Max Head	4.6 Feet (1M)	4.6 Feet (1M)	4.6 Feet (1M)	4.6 Feet (1M)	4.6 Feet (1M)	4.6 Feet (1M)	4.6 Feet (1M)
Inlet	3/8" OD	1/2" OD	1/4" MPT	3/8" OD	1/2" OD	1/4" MPT	Screen
Outlet	3/8" OD	1/2" OD	1/4" MPT	3/8" OD	1/2" OD	1/4" MPT	1/4" MPT
HP	1/200	1/200	1/200	1/200	1/200	1/200	1/200
RPM	3200	3200	3200	3200	3200	3200	3200
Volts	115 or 230	115 or 230	115 or 230	115 or 230	115 or 230	115 or 230	115 or 230
Phase	1	1	1	1	1	1	1
Amps	0.45 0.23	0.45 0.23	0.45 0.23	0.45 0.23	0.45 0.23	0.45 0.23	0.45 0.23
Motor Type	Air Cooled	Air Cooled	Air Cooled	TE/SUB	TE/SUB	TE/SUB	TE/SUB
Elec. Connect.	Leads	Leads	Leads	Cord	Cord	Cord	Cord
Max Int. Press.	50PSI	50PSI	50PSI	50PSI	50PSI	50PSI	50PSI
Max Liquid Temp.	190F	190F	190F	190F Open Air, 160F Sub	190F Open Air, 160F Sub	190F Open Air, 160F Sub	190F Open Air, 160F Sub
Weight Packed	2.3 lbs.	2.3 lbs.	2.3 lbs.	2.5 lbs.	2.5 lbs.	2.5 lbs.	2.5 lbs.
Materials in Contact	Polypropylene, Nylon, Buna N, 316 SS, Carbon/ Teflon, Ceramic Magnet	Polypropylene, Nylon, Buna N, 316 SS, Carbon/ Teflon, Ceramic Magnet	Polypropylene, Nylon, Buna N, 316 SS, Carbon/ Teflon, Ceramic Magnet	Polypropylene, Nylon, Buna N, 316 SS, Carbon/ Teflon, Ceramic Magnet	Polypropylene, Nylon, Buna N, 316 SS, Carbon/ Teflon, Ceramic Magnet	Polypropylene, Nylon, Buna N, 316 SS, Carbon/ Teflon, Ceramic Magnet *	Polypropylene, Nylon, Buna N, 316 SS, Carbon/ Teflon, Ceramic Magnet *

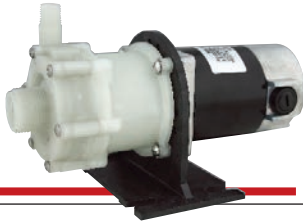
*When submerged in solution, also in contact: epoxy, noryl, cycolac, delrin, cord
Data in Parentheses corresponds to pump performance on 50HZ



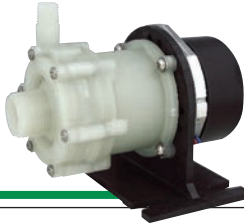
MODEL LC-2CP-MD



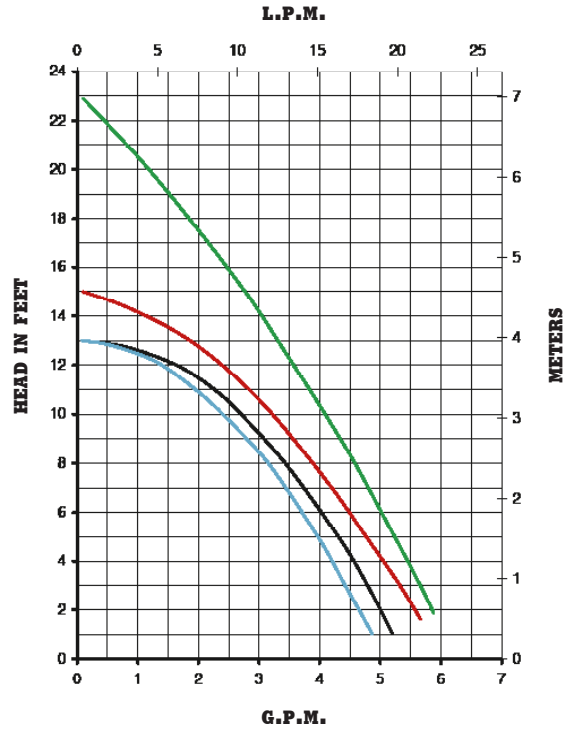
MODEL AC-2CP-MD



MODEL BC-2CP-MD Brush



MODEL BC-2CP-MD Brushless

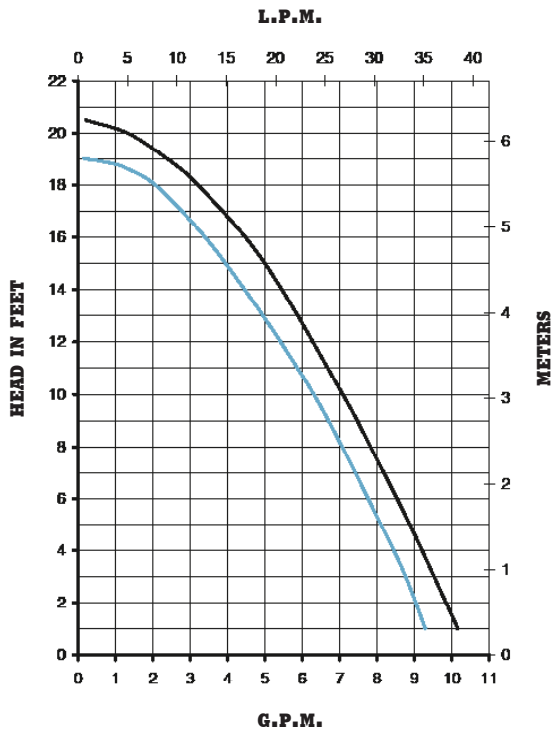


SERIES 2

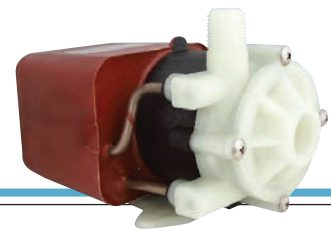
SERIES 2	2CP-MD	LC-2CP-MD	AC-2CP-MD	BC-2CP-MD	BC-2CP-MD Brush-Type	BC-2CP-MD Brushless
Max Flow	5GPM (18.5LPM)	5GPM (18.5LPM)	5GPM (18.5LPM)	5GPM (18.5LPM)	6GPM (22.7LPM)	6GPM (22.7LPM)
Max Head	13 Feet (2.7M)	13 Feet (2.7M)	13 Feet (2.7M)	13 Feet (2.7M)	15 Feet (4.6M)	23 Feet (7M)
Inlet	3/8" FPT and 3/4" MPT	3/8" FPT and 3/4" MPT	3/8" FPT and 3/4" MPT	3/8" FPT and 3/4" MPT	3/8" FPT and 3/4" MPT	3/8" FPT and 3/4" MPT
Outlet	1/4" MPT	1/4" MPT	1/4" MPT	1/4" MPT	1/4" MPT	1/4" MPT
HP	1/35	1/35	1/40	1/40	1/25	—
RPM	3450	3450	3450	3450	3450	3450
Volts	115 or 230	115 or 230	115 or 230	115 or 230	12V or 24V	12V (10-14) or 24V (20-28)
Phase	1	1	1	1	DC	DC
Amps	0.92 0.53	0.92 0.53	1.2 0.6	1.2 0.5	1.4 0.7	3.1 1.6
Motor Type	SUB Blue	TE/SUB Maroon	Air Cooled	Blast Cooled	Air Cooled	Air Cooled
Elec. Connect.	Cord	Cord	Cord	Cord	Leads	Leads
Max Int. Press.	50PSI	25PSI	50PSI	50PSI	50PSI	50PSI
Max Liquid Temp.	130F	130F	190F	190F	190F	190F
Weight Packed	5 lbs.	5 lbs.	4.5 lbs.	6.5 lbs.	4 lbs.	2 lbs.
Materials in Contact	Polypropylene, Ceramic, Viton, Stainless Steel, Ceramic Magnet ***	Polypropylene, Ceramic, Viton, Stainless Steel, Ceramic Magnet ***	Polypropylene, Ceramic, Viton, Ceramic Magnet *	Polypropylene, Ceramic, Viton *	Polypropylene, Ceramic, Viton *	Polypropylene, Ceramic, Viton *

*Smooth inlet/outlet available

***When submerged, also in contact: Epoxy, Buna N, and cord
Data in Parentheses corresponds to pump performance on 50HZ



MODEL LC-3CP-MD



MODEL AC-3CP-MD



MODEL BC-3CP-MD



SERIES 3

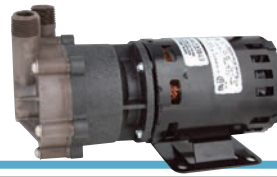
SERIES 3	LC-3CP-MD	AC-3CP-MD	BC-3CP-MD	BC-3K-MD
Max Flow	8.5GPM (31LPM)	10GPM (33LPM)	10GPM (33LPM)	10GPM (33LPM)
Max Head	19 Feet (4.3M)	20.5 Feet (4.5M)	20.5 Feet (4.5M)	20.5 Feet (4.5M)
Inlet	3/4" FPT	3/4" FPT	3/4" FPT	3/4" FPT
Outlet	1/2" MPT	1/2" MPT	1/2" MPT	1/2" MPT
HP	1/20	1/15	1/15	1/15
RPM	3450	3450	3450	3450
Volts	115 or 230	115 or 230	115 or 230	115 or 230
Phase	1	1	1	1
Amps	2.0 1.0	2.3 0.9	2.1 0.9	2.1 0.9
Motor Type	TE/SUB Maroon	Air Cooled	Blast Cooled	Blast Cooled
Elec. Connect.	Cord	Leads	Leads	Leads
Max Int. Press.	25PSI	50PSI	50PSI	75PSI
Max Liquid Temp.	130F	190F	190F	200F
Weight Packed	8.5 lbs.	7 lbs.	8 lbs.	8 lbs.
Materials in Contact	Polypropylene, Epoxy, Cupric Nickel, Buna N, Ceramic Magnet	Polypropylene, Ceramic Magent, Ceramic, Buna N *	Polypropylene, Ceramic, Ceramic, Viton *	Kynar, Ceramic, Viton *

*Smooth inlet/outlet available

Data in Parentheses corresponds to pump performance on 50HZ



MODEL MDXT-3



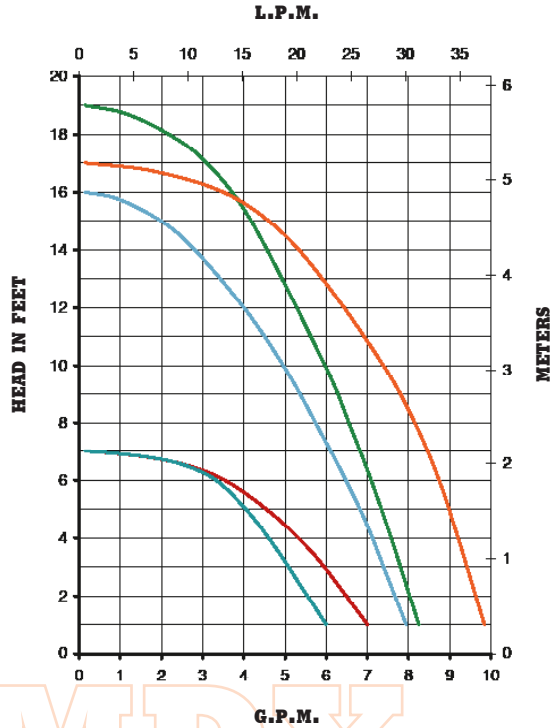
MODEL MDX-MT3



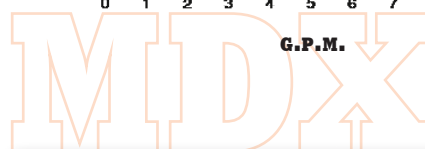
MODEL MDX-3-1/2



MODEL TE-MDK-MT3

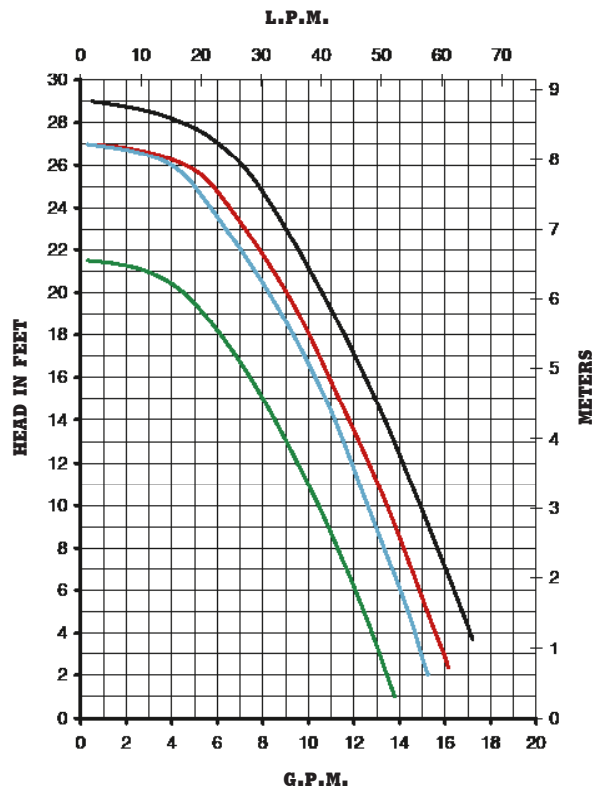


SERIES MDX	MDX-1/2	MDX-5/8	MDXT
Max Flow	6 GPM (22LPM)	6 GPM (22LPM)	7 GPM (22LPM)
Max Head	7 Feet (1.6M)	7 Feet (1.6M)	7 Feet (1.6M)
Inlet	1/2" OD	5/8" OD	1/2" FPT
Outlet	1/2" OD	5/8" OD	3/8" MPT
HP	1/55	1/55	1/55
RPM	1750	1750	1750
Volts	115 or 230	115 or 230	115 or 230
Phase	1	1	1
Amps	.94 .45	.94 .45	.94 .45
Motor Type	Air Cooled	Air Cooled	Air Cooled
Elec. Connect.	Cord	Cord	Cord
Max Int. Press.	50 PSI	50 PSI	50 PSI
Max Liquid Temp.	190F	190F	190F
Weight Packed	5.5 lbs.	5.5 lbs.	5.5 lbs.
Materials in Contact	Polypropylene, Kynar, Buna N, Ceramic Magnet	Polypropylene, Kynar, Buna N, Ceramic Magnet	Polypropylene, Ceramic Shaft & Thrust Washer, Buna N, Ceramic Magnet



SERIES MDX	MDXT-3	MDX-3 1/2	MDX-3 5/8	MDX-MT3	MDK-MT3	TE-MDX-MT3	TE-MDK-MT3
Max Flow	8.5GPM (30LPM)	8.5GPM (30LPM)	8.5GPM (30LPM)	8GPM (30LPM)	8GPM (30LPM)	10GPM (35LPM)	10GPM (35LPM)
Max Head	19 Feet (4M)	19 Feet (4M)	19 Feet (4M)	16 Feet (3.5M)	16 Feet (3.5M)	17 Feet (3.7M)	17 Feet (3.7M)
Inlet	1/2" FPT	1/2" OD	5/8" OD	1/2" MPT	1/2" MPT	1/2" MPT	1/2" MPT
Outlet	3/8" FPT	1/2" OD	5/8" OD	1/2" MPT	1/2" MPT	1/2" MPT	1/2" MPT
HP	1/25	1/25	1/25	1/25	1/25	1/15	1/15
RPM	3450	3450	3450	3450	3450	3450	3450
Volts	115 or 230	115 or 230	115 or 230	115 or 230	115 or 230	115 or 230	115 or 230
Phase	1	1	1	1	1	1	1
Amps	1.55 .7	1.55 .7	1.55 .7	1.35 0.85	1.35 0.85	1.0 / .5	1.0 / .5
Motor Type	Air Cooled	Air Cooled	Air Cooled	Air Cooled	Air Cooled	TEFC	TEFC
Elec. Connect.	Cord	Cord	Cord	Cord	Cord	Conduit Box	Conduit Box
Max Int. Press.	50PSI	50PSI	50PSI	75PSI	75PSI	75PSI	75PSI
Max Liquid Temp.	190F	190F	190F	200F	200F	200F	200F
Weight Packed	6 lbs.	6 lbs.	6 lbs.	6.5 lbs.	6.5 lbs.	10 lbs.	10 lbs.
Materials in Contact	Polypropylene, Ceramic Shaft & Thrust Washer, Buna N, Ceramic Magnet	Polypropylene, Kynar, Ryton/Teflon/Carbon, Stainless Steel, Buna N, Ceramic Magnet	Polypropylene, Kynar, Ryton/Teflon/Carbon, Stainless Steel, Buna N, Ceramic Magnet	Ryton, Ceramic, Viton	Kynar, Ceramic, Viton	Ryton, Ceramic, Viton	Kynar, Ceramic, Viton

Data in Parentheses corresponds to pump performance on 50HZ



MODEL AC-4C-MD



MODEL AC-5C-MD



MODEL TE-5K-MD



MODEL TE-5S-MD



SERIES 4 & 5

SERIES 4 & 5	AC-4C-MD	BC-4C-MD	5C-MD	LC-5C-MD	AC-5C-MD	TE-5C-MD	TE-5K-MD	TE-5S-MD
Max Flow	14GPM (50LPM)	14GPM (50LPM)	14.5GPM (54.8LPM)	14.5GPM (54.8LPM)	17GPM (60LPM)	18GPM (60.5LPM)	18GPM (60.5LPM)	18GPM (60.5LPM)
Max Head	21.5 Feet (4.7M)	21.5 Feet (4.7M)	27 Feet (6M)	27 Feet (6M)	27 Feet (6M)	29 Feet (6.3M)	29 Feet (6.3M)	29 Feet (6.3M)
Inlet	1" FPT	1" FPT	1" FPT	1" FPT	1" FPT	1" FPT	1" FPT	1" FPT
Outlet	1/2" MPT	1/2" MPT	1/2" MPT	1/2" MPT	1/2" MPT	1/2" MPT	1/2" MPT	1/2" MPT
HP	1/12	1/10	1/8	1/8	1/8	1/5	1/5	1/5
RPM	3450	3450	3450	3450	3450	3450	3450	3450
Volts	115 or 230	115 or 230	115 or 230	115 or 230	115 or 230	115 or 230	115 or 230	115 or 230
Phase	1	1	1	1	1	1	1	1
Amps	1.75 .75	1.9 0.75	1.6 0.9	1.6 0.9	2.1 1	2.1 1.05	2.1 1.05	2.1 1.05
Motor Type	Air Cooled	Blast Cooled	SUB Blue	TE/SUB Maroon	Air Cooled	TEFC	TEFC	TEFC
Elec. Connect.	Cord	Cord	Cord	Cord	Cord	Conduit Box	Conduit Box	Conduit Box
Max Int. Press.	50PSI	50PSI	50PSI	50PSI	50PSI	50PSI	75PSI	200PSI
Max Liquid Temp.	190F	190F	130F	130F	190F	190F	200F	250F
Weight Packed	8.5 lbs.	8.5 lbs.	18 lbs.	18 lbs.	9.5 lbs.	15.5 lbs.	15.5 lbs.	18 lbs.
Materials in Contact	Polypropylene, Ceramic, Ceramic Magnet, Buna N *	Polypropylene, Ceramic, Viton *	Stainless Steel, Epoxy, Polypropylene, Ceramic Magnet, Buna N, Cord	Polypropylene, Ceramic, Buna N, Stainless Steel, Ceramic Magnet	Polypropylene, Ceramic, Buna N, Ceramic Magnet *	Polypropylene, Ceramic, Viton *	Carbon/Kynar, Ceramic, Viton	316 Stainless, Viton, Ceramic, Carbon Bushing

*Smooth inlet/outlet available

Data in Parentheses corresponds to pump performance on 50HZ



MODEL TE-5.5C-MD-AC



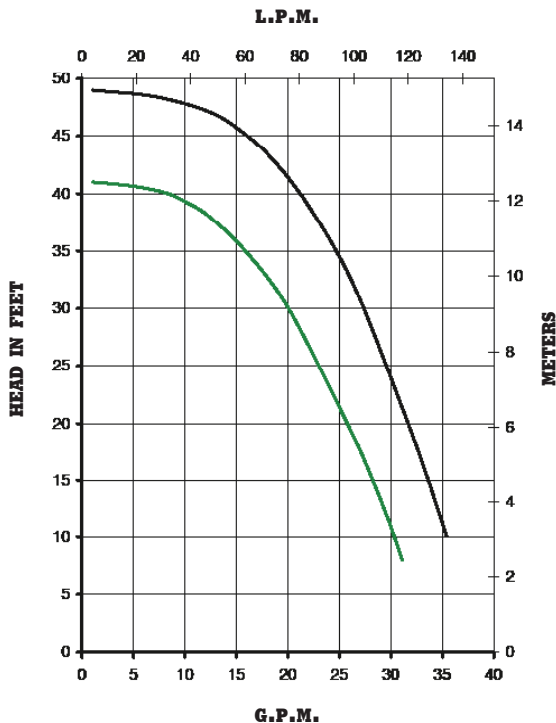
MODEL TE-5.5C-MD



MODEL TE-5.5S-MD



MODEL TE-6T-MD



SERIES 5.5 & 6

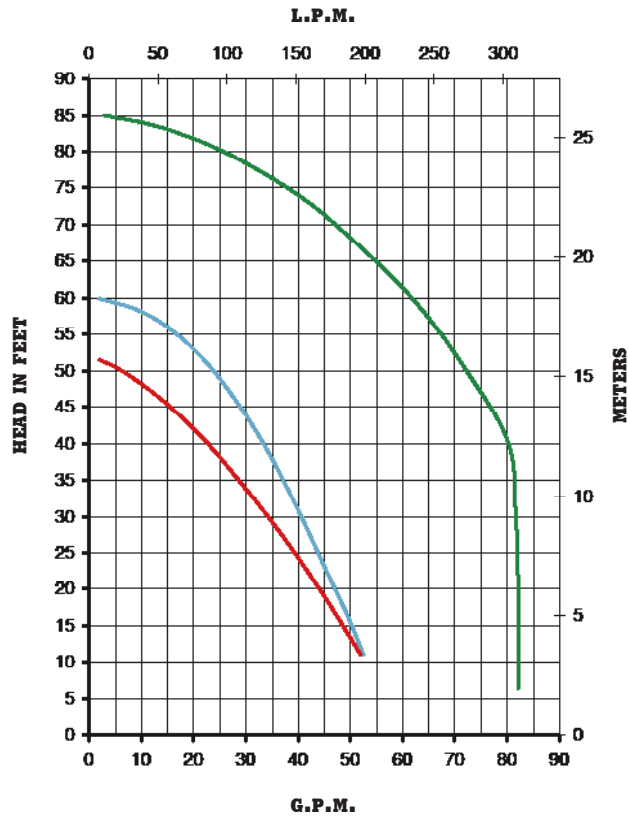
SERIES 5.5 & 6	TE-5.5C-MD	TE-5.5K-MD	TE-5.5S-MD	TE-6T-MD	TE-6K-MD
Max Flow	30GPM (102LPM)	30GPM (102LPM)	30GPM (102LPM)	38GPM (113.5LPM)	38GPM (113.5LPM)
Max Head	41 Feet (9M)	41 Feet (9M)	41 Feet (9M)	49 Feet (11M)	49 Feet (11M)
Inlet	1" FPT	1" FPT	1" FPT	1" FPT	1" FPT
Outlet	3/4" MPT	3/4" MPT	3/4" MPT	3/4" MPT	3/4" MPT
HP	1/3	1/3	1/3	1/2	1/2
RPM	3450	3450	3450	3450	3450
Volts	115/230 or 230/460	115/230 or 230/460	115/230 or 230/460	115/230 or 230/460	115/230 or 230/460
Phase	1 or 3	1 or 3	1 or 3	1 or 3	1 or 3
Amps	1 (4.4/2.2) 3 (1.2/.6)	1 (4.4/2.2) 3 (1.2/.6)	1 (4.4/2.2) 3 (1.2/.6)	1 (7.4/3.7) 3 (1.5/.7)	1 (7.4/3.7) 3 (1.5/.7)
Motor Type	TEFC	TEFC	TEFC	TEFC	TEFC
Elec. Connect.	Conduit Box	Conduit Box	Conduit Box	Conduit Box	Conduit Box
Max Int. Press.	50PSI	75PSI	200PSI	50PSI	75PSI
Max Liquid Temp.	190F	200F	250F	190F	200F
Weight Packed	34.5 lbs.	35 lbs.	39 lbs.	34.5 lbs.	34.5 lbs.
Materials in Contact	Polypropylene, Ceramic, Viton *	Kynar, Ceramic, Viton *	316 Stainless Steel, Viton, Ceramic, Carbon Bushing	Polypropylene, Ryton, Ceramic, Viton, Teflon/ Ryton/Carbon Bushing **	Kynar, Ceramic, Viton, Carbon Bushing **

*Air Cooled motor available

**Drip Proof motor available

Data in Parentheses corresponds to pump performance on 50HZ





MODEL TE-7R-MD



MODEL TE-7S-MD



(Self-Priming)

MODEL SP-TE-7K-MD



MODEL TE-7.5K-MD

SERIES 7 & 7.5

SERIES 7 & 7.5	TE-7R-MD	TE-7K-MD	TE-7S-MD	SP-TE-7P-MD	SP-TE-7K-MD	TE-7.5P-MD	TE-7.5K-MD
Max Flow	53GPM (180LPM)	53GPM (180LPM)	53GPM (180LPM)	53GPM (180LPM)	53GPM (180LPM)	82GPM (268LPM)	82GPM (268LPM)
Max Head	60 Feet (12.3M)	60 Feet (12.3M)	57.5 Feet (12M)	52 Feet (11M)	52 Feet (11M)	85 Feet (18M)	85 Feet (18M)
Inlet	1 1/2" FPT	1 1/2" FPT	1 1/2" FPT	1 1/2" FPT	1 1/2" FPT	2" MPT	2" MPT
Outlet	1" MPT	1" MPT	1" MPT	1" MPT	1" MPT	1 1/2" MPT	1 1/2" MPT
HP	3/4	3/4	1	1	1	2	2
RPM	3450	3450	3450	3450	3450	3450	3450
Volts	115/230 or 230/460	115/230 or 230/460	115/230 or 230/460	115/230 or 230/460	115/230 or 230/460	230/460	230/460
Phase	1 or 3	1 or 3	1 or 3	1 or 3	1 or 3	3	3
Amps	1 (9.7/4.9) 3 (2.2/1.1)	1 (9.7/4.9) 3 (2.2/1.1)	1 (11.8/5.9) 3 (3/1.5)	1 (11.8/5.9) 3 (3/1.5)	1 (11.8/5.9) 3 (3/1.5)	5.4, 2.7	5.4, 2.7
Motor Type	TEFC	TEFC	TEFC	TEFC	TEFC	TEFC	TEFC
Elec. Connect.	Conduit Box	Conduit Box	Conduit Box	Conduit Box	Conduit Box	Conduit Box	Conduit Box
Max Int. Press.	50PSI	75PSI	200PSI	50PSI	50PSI	60PSI	60PSI
Max Liquid Temp.	190F	200F	250F	190F	190F	190F	190F
Weight Packed	38.5 lbs.	38.5 lbs.	49.5 lbs.	57 lbs.	57 lbs.	53 lbs.	53 lbs.
Suction Lift	0	0	0	12 Feet	12 Feet	0	0
Materials in Contact	Polypropylene, Ryton, Ceramic, Ryton/Teflon/Carbon/Bushing, Viton *Available with 1HP motor	Carbon Filled Kynar, Carbon Bushing, Viton *Available with 1HP motor	316 Stainless Steel, Ceramic, Carbon Bushing, Viton	Polypropylene, Ceramic, Carbon Bushing, Viton	Carbon Filled Kynar, Ceramic, Carbon Bushing, Viton	Polypropylene, Ceramic, Carbon Bushing, Viton	Natural Kynar, Ceramic, Carbon Bushing, Viton

Data in Parentheses corresponds to pump performance on 50HZ



SERIES 8 & 10



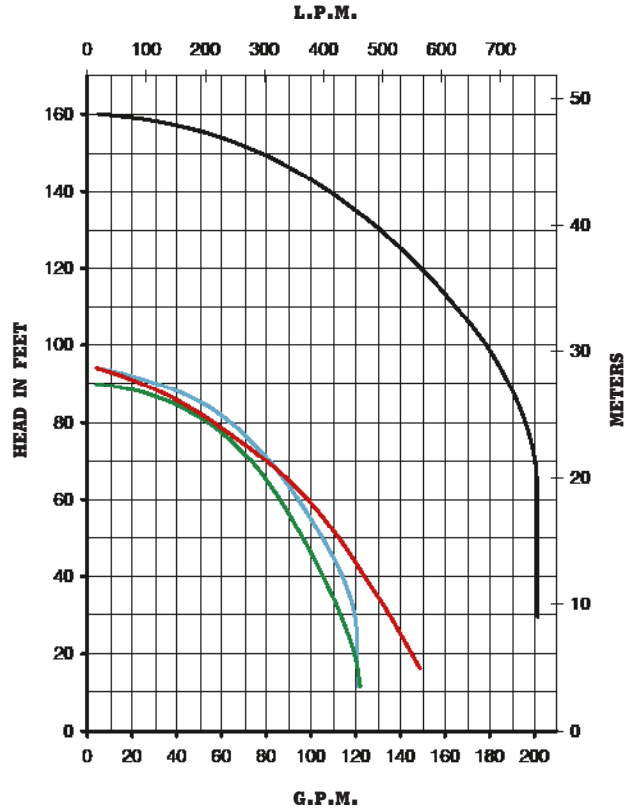
MODEL TE-8C-MD



MODEL TE-8S-MD



MODEL TE-10K-MD

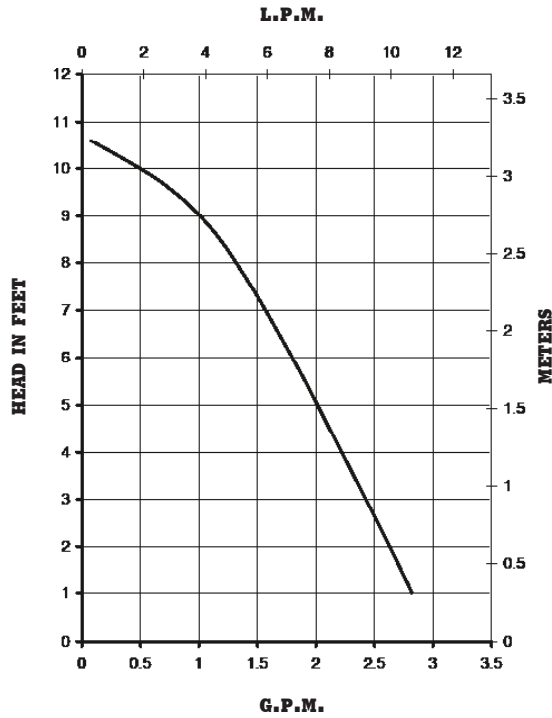


SERIES 8 & 10

SERIES 8 & 10	TE-8C-MD	TE-8K-MD	TE-8S-MD	TE-8C-MD-HF	TE-8K-MD-HF	TE-10K-MD
Max Flow	120GPM (400LPM)	120GPM (400LPM)	120GPM (400LPM)	150GPM (470LPM)	150GPM (470LPM)	200GPM (654LPM)
Max Head	95 Feet (20M)	95 Feet (20M)	90 Feet (19.3M)	95 Feet (20M)	95 Feet (20M)	160 Feet (34.1M)
Inlet	2" MPT	2" MPT	2" MPT	2" MPT	2" MPT	3" MPT
Outlet	1 1/2" MPT	1 1/2" MPT	1 1/2" MPT	1 1/2" MPT	1 1/2" MPT	2" MPT
HP	3	3	5	5	5	10
RPM	3450	3450	3450	3450	3450	3450
Volts	230/460	230/460	230/460	230/460	230/460	230/460
Phase	3	3	3	3	3	3
Amps	7.8 3.9	7.8 3.9	12.6 6.3	12.6 6.3	12.6 6.3	22.8 11.4
Motor Type	TEFC	TEFC	TEFC	TEFC	TEFC	TEFC
Elec. Connect.	Conduit Box	Conduit Box	Conduit Box	Conduit Box	Conduit Box	Conduit Box
Max Int. Press.	50PSI	75PSI	200PSI	50PSI	75PSI	75PSI
Max Liquid Temp.	190F	200F	250F	190F	200F	190F
Weight Packed	160 lbs.	160 lbs.	180 lbs.	170 lbs.	170 lbs.	260 lbs.
Materials in Contact	Polypropylene, Carbon Filled Kynar, Viton, Teflon/Ryton/ Carbon Bushing, Ceramic *	Carbon Filled Kynar, Ceramic, Viton, Carbon Bushing *	316 Stainless Steel, Viton, Ceramic, Carbon Bushing	Polypropylene, Carbon Filled Kynar, Viton, Teflon/Ryton/ Carbon Bushing, Ceramic	Carbon Filled Kynar, Ceramic, Viton, Carbon Bushing	Kynar, Ceramic, Viton, Carbon Bushings

*Available with 5HP Motor

Data in Parentheses corresponds to pump performance on 50HZ



MODEL 893-04



MODEL 893-07

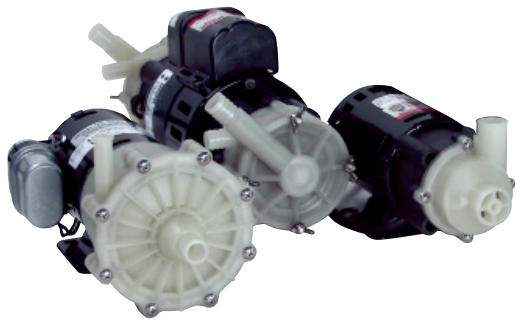


MODEL 893-09



SERIES 893

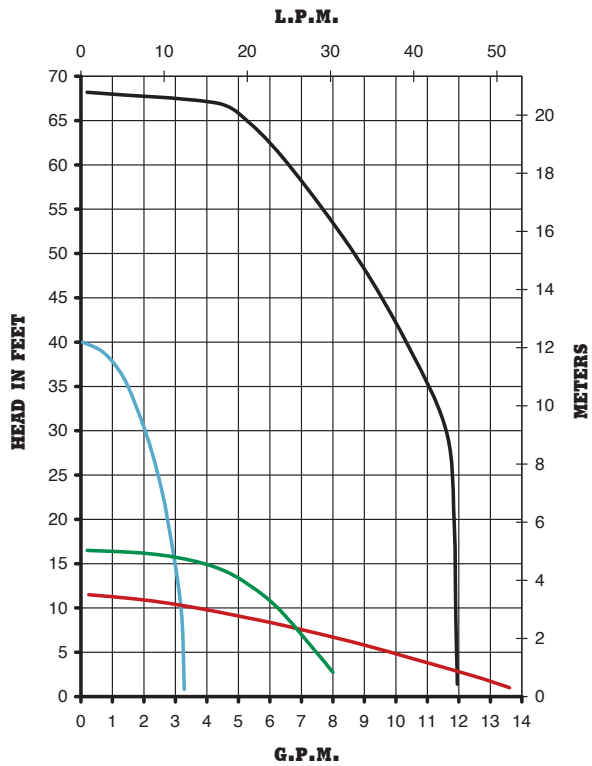
SERIES 893	893-03 Brush-Type	893-04 Brush-Type	893-05 Brush-Type	893-06 Brush-Type	893-07 Brushless	893-08 Brushless	893-09 Brushless	893-10 Brushless
Max Flow	2.7GPM (11LPM)	2.7GPM (11LPM)	2.7GPM (11LPM)	2.7GPM (11LPM)	2.7GPM (11LPM)	2.7GPM (11LPM)	2.7GPM (11LPM)	2.7GPM (11LPM)
Max Head	10.6 Feet (3.3M)	10.6 Feet (3.3M)	10.6 Feet (3.3M)	10.6 Feet (3.3M)	10.6 Feet (3.3M)	10.6 Feet (3.3M)	10.6 Feet (3.3M)	10.6 Feet (3.3M)
Inlet	3/8" FPT	3/8" FPT	3/8" FPT	3/8" FPT	3/8" FPT	3/8" FPT	3/8" FPT	3/8" FPT
Outlet	3/8" OD	3/8" OD	3/8" OD	3/8" OD	3/8" OD	3/8" OD	3/8" OD	3/8" OD
HP	1/150	1/150	1/150	1/150	1/150	1/150	1/150	1/150
RPM	4000	4000	4000	4000	4000	4000	4000	4000
Volts	12	12	24	24	12(7-14)	24(12-26)	12(7-14)	24(12-26)
Phase	DC	DC	DC	DC	DC	DC	DC	DC
Amps	1	1	.05	.05	1	.05	1	.05
Motor Type	Air Cooled	SUB	Air Cooled	SUB	Air Cooled	Air Cooled	TE/SUB	TE/SUB
Elec. Connect.	Leads	Leads	Leads	Leads	Leads	Leads	Leads	Leads
Max Int. Press.	50PSI	50PSI	50PSI	50PSI	50PSI	50PSI	50PSI	50PSI
Max Liquid Temp.	190F	160F SUB	190F	160F SUB	190F	190F	190F Open Air, 130F SUB	190F Open Air, 130F SUB
Weight Packed	1 lbs.	1.2 lbs.	1 lbs.	1.2 lbs.	1 lbs.	1 lbs.	1.2 lbs.	1.2 lbs.
Materials in Contact	Noryl, Nylon, Buna N, 316 Stainless Steel, Ceramic Magnet, Delrin, Epoxy and Motor Leads	Noryl, Nylon, Buna N, 316 Stainless Steel, Ceramic Magnet, Delrin, Epoxy and Motor Leads	Noryl, Nylon, Buna N, 316 Stainless Steel, Ceramic Magnet, Delrin, Epoxy and Motor Leads	Noryl, Nylon, Buna N, 316 Stainless Steel, Ceramic Magnet, Delrin, Epoxy and Motor Leads	Noryl, Nylon, Buna N, 316 Stainless Steel, Ceramic Magnet, Delrin, Epoxy and Motor Leads	Noryl, Nylon, Buna N, 316 Stainless Steel, Ceramic Magnet, Delrin, Epoxy and Motor Leads	Noryl, Nylon, Buna N, 316 Stainless Steel, Ceramic Magnet, Delrin, Epoxy and Motor Leads	Noryl, Nylon, Buna N, 316 Stainless Steel, Ceramic Magnet, Delrin, Epoxy and Motor Leads



MODEL 320CP-MD, MODEL 140



MODEL 335CP-MD, MODEL 802 Dual Head



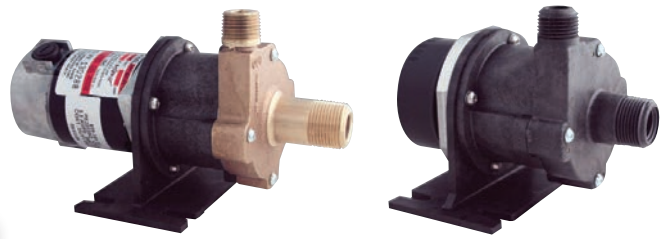
320, 335, 140, 802

SERIES 320, 335, 140, 802, 851	320-CP-MD	335-CP-MD	140	802 Dual Head
Max Flow	3.3GPM (11.3LPM)	12GPM (37.8LPM)	12.5GPM (55LPM)	8GPM (26LPM)
Max Head	40 Feet (8.8M)	68 Feet (14.6M)	11.5 Feet (2.5M)	16.5 Feet (3.9M)
Inlet	1/2" MPT	3/4" MPT	1 1/8" OD	1/2" OD
Outlet	3/8" MPT	3/4" MPT	7/8" OD	1/2" OD
HP	1/12	1/3	1/20	1/8
RPM	3450	3450	3450	3450
Volts	115 or 230	115/230 230/460	115 or 230	230
Phase	1	1 or 3	1	1
Amps	1.75 .75	4.4/2.2 1.2/0.6	1.3 .69	.84
Motor Type	Air Cooled	TEFC	Air Cooled	Air Cooled
Elec. Connect.	Cord	Conduit Box	Leads	Leads
Max Int. Press.	50PSI	50PSI	50PSI	50PSI
Max Liquid Temp.	190F	190F	190F	190F
Weight Packed	10 lbs.	21 lbs.	6 lbs.	10.5 lbs.
Materials in Contact	Polypropylene, Ceramic, Viton *	Polypropylene, Ceramic, Viton *	Polypropylene, Buna N, Ceramic Magnet, Ceramic	Polypropylene, Kynar Carbon Filled, Ryton/Teflon/ Carbon, Ethylene Propylene, Ceramic Magnet, 316 Stain- less Steel

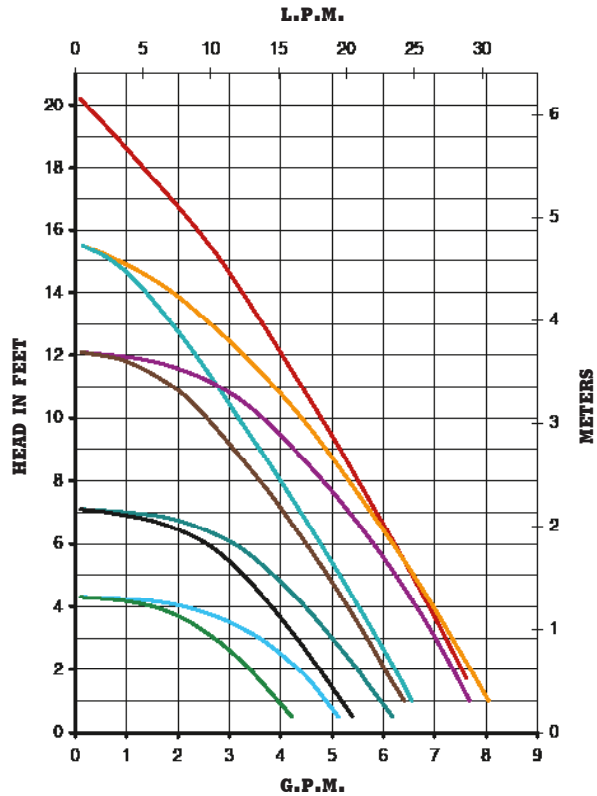
*Smooth Inlet/Outlet available

Data in Parentheses corresponds to pump performance on 50HZ

809



SERIES 809	809-PL	809-BR-C
Max Flow	4.3GPM (10.3LPM)	5GPM (16.7LPM)
Max Head	4.3 Feet (.92M)	4.3 Feet (.92M)
Inlet	1/2" MPT	3/4" MPT
Outlet	1/2" MPT	1/2" MPT
HP	1/100	1/100
RPM	1750	1750
Volts	115 or 230	115 or 230
Phase	1	1
Amps	.5 .17	.94 .45
Motor Type	Air Cooled	Air Cooled
Elec. Connect.	Conduit Box	Conduit Box
Max Int. Press.	50PSI	150PSI
Max Liquid Temp.	250F	250F
Weight Packed	5 lbs.	6 lbs.
Materials in Contact	Polysulfone, Stainless Steel, Teflon, Silicone, Ryton/Teflon/Carbon *	Bronze, Stainless Steel, Teflon, Silicone, Ryton/Teflon/Carbon **

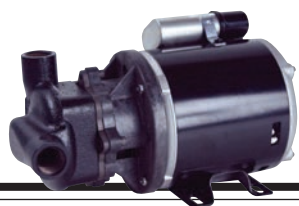


SERIES 809	809-PL Brush-Type	809-BR-C Brush-Type	809-PL-HS	809-BR-HS-C	809-BR-HS Brush Type	809-PL-HS-C Brush-Type	809-PL-HS-C Brushless
Max Flow	5GPM (18.9LPM)	6GPM (22.7LPM)	6GPM (18.9LPM)	7.5GPM (26.4LPM)	6GPM (22.7LPM)	8GPM (30.2LPM)	7.5GPM (28.3LPM)
Max Head	7.1 Feet (2.1M)	7.1 Feet (2.1M)	12.1 Feet (2.5M)	12.1 Feet (2.5M)	15.5 Feet (4.7M)	15.5 Feet (4.7M)	20.2 Feet (6.1M)
Inlet	1/2" MPT	3/4" MPT	1/2" MPT	3/4" MPT	1/2" MPT	3/4" MPT	3/8" FPT & 3/4" MPT
Outlet	1/2" MPT	1/2" MPT	1/2" MPT	1/2" MPT	1/2" MPT	1/2" MPT	1/2" MPT
HP	1/100	1/100	1/25	1/25	1/25	1/25	-
RPM	1850	1850	3450	3450	3450	3450	3450
Volts	12 or 24	12 or 24	115 or 230	115 or 230	12 or 24	12 or 24	12 (10-14) or 24 (20-28)
Phase	DC	DC	1	1	DC	DC	DC
Amps	1.1 .55	1.1 .55	1.4 .7	1.4 .7	3.5 1.8	3.5 1.8	3.1 1.6
Motor Type	Air Cooled	Air Cooled	Air Cooled	Air Cooled	Air Cooled	Air Cooled	Air Cooled
Elec. Connect.	Leads	Leads	Conduit Box	Cord	Leads	Leads	Leads
Max Int. Press.	50PSI	150PSI	50PSI	150PSI	50PSI	150PSI	50PSI
Max Liquid Temp.	250F	250F	250F	250F	250F	250F	250F
Weight Packed	4.5 lbs.	5.5 lbs.	5 lbs.	6 lbs.	4.5 lbs.	5.5 lbs.	4 lbs.
Materials in Contact	Polysulfone, Stainless Steel, Teflon, Silicone, Ryton/Teflon/Carbon *	Bronze, Stainless Steel, Teflon, Silicone, Ryton/Teflon/Carbon **	Polysulfone, Stainless Steel, Teflon, Silicone, Ryton/Teflon/Carbon *	Bronze, Stainless Steel, Teflon, Silicone, Ryton/Teflon/Carbon **	Polysulfone, Stainless Steel, Teflon, Silicone, Ryton/Teflon/Carbon *	Bronze, Stainless Steel, Teflon, Silicone, Ryton/Teflon/Carbon **	Polysulfone, Stainless Steel, Teflon, Silicone, Ryton/Teflon/Carbon **

*Available in Polysulfone and Bronze

** Available in Polysulfone, Bronze, and Stainless Steel

Data in Parentheses corresponds to pump performance on 50HZ



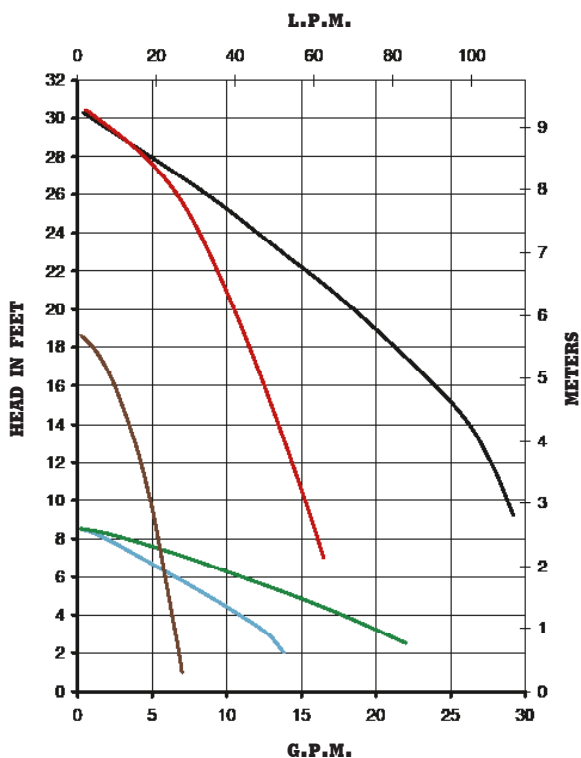
MODEL 830-CI-T



MODEL 821-CI



MODEL 815-BR-C



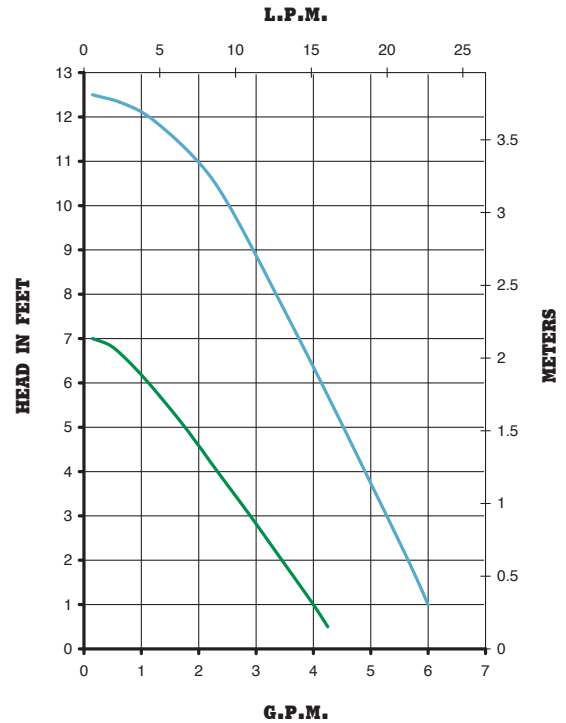
830, 821, 815

830, 821 815	830-CI	830-CI-T	821-CI	821-CI-T	815-PL	815-BR	815-PL-C	815-BR-C
Max Flow	15GPM (52.9LPM)	29GPM (94.6LPM)	22GPM (75.7LPM)	14GPM (45.4LPM)	7GPM (22.7LPM)	7GPM (22.7LPM)	8GPM (30LPM)	8GPM (30LPM)
Max Head	30.5 Feet (6.5M)	30.5 Feet (6.5M)	8.5 Feet (1.6M)	8.5 Feet (1.6M)	18.6 Feet (4.1M)	18.6 Feet (4.1M)	18.6 Feet (4.1M)	18.6 Feet (4.1M)
Inlet	Flange	3/4" FPT	Flange	3/4" FPT	1/2" MPT	1/2" MPT	3/8" FPT, 3/4" MPT	3/4" MPT
Outlet	Flange	3/4" FPT	Flange	3/4" FPT	1/2" MPT	1/2" MPT	1/2" MPT	1/2" MPT
HP	1/5	1/5	1/20	1/20	1/25	1/25	1/25	1/25
RPM	3450	3450	3450	3450	3450	3450	3450	3450
Volts	115 or 230	115 or 230	115 or 230	115 or 230	115 or 230	115 or 230	115 or 230	115 or 230
Phase	1	1	1	1	1	1	1	1
Amps	2.7/1.4	2.7/1.4	1.6 .8	1.6 .8	1.4 .7	1.4 .7	1.4 .7	1.4 .7
Motor Type	Air Cooled	Air Cooled	Air Cooled	Air Cooled	Air Cooled	Air Cooled	Air Cooled	Air Cooled
Elec. Connect.	Conduit Box	Conduit Box	Conduit Box	Conduit Box	Conduit Box	Conduit Box	Conduit Box	Conduit Box
Max Int. Press.	150PSI	150PSI	150PSI	150PSI	50PSI	150PSI	50PSI	150PSI
Max Liquid Temp.	250F	250 F	250F	250F	250F	250F	250F	250F
Weight Packed	21 lbs.	18.5 lbs.	14 lbs.	11.5 lbs.	5 lbs.	6 lbs.	5 lbs.	6 lbs.
Materials in Contact	Cast Iron, 304 Stainless Steel, Ryton, Ceramic, Nitrile/Fibre Gasket *	Cast Iron, 304 Stainless Steel, Ryton, Ceramic, Nitrile/Fibre Gasket *	Cast Iron, 304 Stainless Steel, Ryton, Ceramic, Carbon, Nitrile/Fibre *	Cast Iron, 304 Stainless Steel, Ryton, Ceramic, Carbon, Nitrile/Fibre *	Polysulfone, Stainless Steel, Teflon, Silicone, Ryton/Teflon/Carbon	Bronze, Stainless Steel, Teflon, Silicone, Ryton/Teflon/Carbon	Polysulfone, Stainless Steel, Teflon, Silicone, Ryton/Teflon/Carbon **	Bronze, Stainless Steel, Teflon, Silicone, Ryton/Teflon/Carbon **

*Available in Bronze

** Available in Stainless Steel

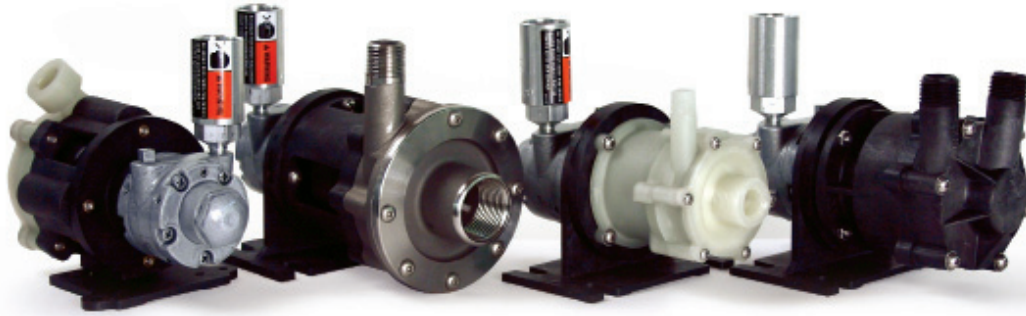
Data in Parentheses corresponds to pump performance on 50HZ



SEALED & METERING

SEALED & METERING	1-1C	1-1U	2C	2U	210-5	210-10	212
Max Flow	4.5GPM	4.5GPM	6.5GPM	6.5GPM	1 to 115cc/min	5 to 350cc/min	50 to 1000cc/min
Max Head	7 Feet	7 Feet	12.5 Feet	12.5 Feet	160PSI	160PSI	60PSI
Inlet	3/8" MPT	Screen	3/8" MPT	Screen	1/4" FPT	1/4" FPT	1/4" FPT
Outlet	1/4" MPT	1/4" MPT	1/4" MPT	1/4" MPT	1/4" MPT	1/4" MPT	1/4" FPT
HP	1/75	1/75	1/35	1/35	1/50	1/50	1/50
RPM	3200	3200	3200	3200	75	235	235
Volts	115 or 230	115 or 230	115 or 230	115 or 230	115 or 230	115 or 230	115 or 230
Phase	1	1	1	1	1	1	1
Amps	.75 .37	.75 .37	1.2 .60	1.2 .60	.8 .35	.8 .35	.8 .35
Motor Type	TE/SUB	SUB	TE/SUB	SUB	Air Cooled	Air Cooled	Air Cooled
Elec. Connect.	Cord	Cord	Cord	Cord	Cord	Cord	Cord
Max Int. Press.	20PSI	20PSI	20PSI	20PSI	160PSI	160PSI	90PSI
Max Liquid Temp.	130F	130F	130F	130F	190F	190F	190F
Weight Packed	3 lbs.	3 lbs.	4 lbs.	4 lbs.	5.5 lbs.	5.5 lbs.	5 lbs.
Materials in Contact	Nylon, Stainless Steel, Viton, Cork & Neoprene Gaskets, Aluminum Bracket	Nylon, Delrin, Noryl, Stainless Steel, Viton, Cork & Neoprene	Nylon, Stainless Steel, Viton, Cork & Neoprene Gaskets, Aluminum Bracket	Nylon, Delrin, Noryl, Stainless Steel, Viton, Cork & Neoprene	Ryton, Viton, Teflon, Ceramic	Ryton, Viton, Teflon, Ceramic	Ryton, Viton, Teflon, Ceramic

*Sealed pumps cannot run on 50HZ



AIR MOTORS

AIR MOTORS	MDXT-3-AM	MDXT-MT3-AM	BC-2CP-MD-AM	BC-3CP-MD-AM	BC-4C-MD-AM	TE-5S-MD-AM
Max Flow	10GPM (37LPM)	9GPM (34LPM)	7.2GPM (27.2LPM)	10.5GPM (39LPM)	18GPM (68LPM)	18GPM (68LPM)
Max Head	29 Feet (8.8M)	28 Feet (8.5M)	40 Feet (12.1M)	42 Feet (12.8M)	50 Feet (15.2M)	50 Feet (15.2M)
Inlet	1/2" FPT	1/2" MPT	3/8"FTP & 3/4" MPT	3/4" FPT	1" FPT	1" FTP
Outlet	3/8" FPT	1/2" MPT	1/4" MPT	1/2" MPT	1/2" MPT	1/2" MPT
HP	1/8	1/8	1/8	1/8	1/8	1/8
Max Air	21PSI	21PSI	23PSI	29PSI	65PSI	60PSI
CFM Required	3	3	4	4	8	7

MARCH MANUFACTURING, INC.
 1819 Pickwick Avenue
 Glenview, Illinois 60026-1306

P 847.729.5300
F 847.729.7062
WWW.MARCHPUMP.COM
SALES@MARCHPUMP.COM



SINCE 1954

