

# SpiralTrac™

# Municipal



SpiralTrac is a revolutionary environmental controller for seal and packing chambers, and has established new standards worldwide for exploiting the maximum performance potential of rotating process equipment in many municipal and waste treatment areas.



A SpiralTrac Enhanced Environment increases the sealing element life, while decreasing flush and product leakage at the same time.

Use SpiralTrac in Process Pumps from the following manufacturers:

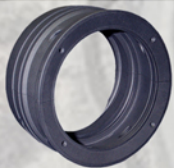
**Allis-Chalmers**  
**Alweiler**  
**ASH Pumps**  
**Chesterton**  
**Chicago**  
**Clow**  
**Fairbank Morse**  
**Goulds**  
**GIW**  
**Hayward Gordon**  
**Ingersoll Dresser**  
**Ingersoll Rand**  
**Johnson**  
**Patterson**  
**Warman**  
**Worthington**

*Listed below are some sample municipal applications currently using SpiralTrac*

<b>Application</b>	<b>Sealing Solution</b>	<b>Equipment / SpiralTrac Version and Type</b>
Canal Water	Mechanical Seal	Johnson Vertical / SpiralTrac Version D Type A
Canal Water	Packing	Johnson WWK / SpiralTrac Version P
DAF Recirc	Packing	Goulds 3196MT / SpiralTrac Version P
Sewage	Mechanical Seal	A-C 10X8X21, Model 150 / SpiralTrac Version N
Sewage	Mechanical Seal	Ingersoll Dresser Vertical / SpiralTrac Version F Type S
Sewage	Mechanical Seal	Clow Vertical / SpiralTrac Version F Type S
Sewage	Mechanical Seal	A-C ITT Vertical / SpiralTrac Version D
Sewage	Mechanical Seal	Fairbank Morse Vertical / SpiralTrac Version F Type S
Sewage	Packing	Wemco Torque Flow Mod C / SpiralTrac Version P
Sewage	Packing	Chicago 64131 / SpiralTrac Version P
Sewage	Packing	Fairbank Morse C57415 / SpiralTrac Version P
Sewage	Packing	Clow / SpiralTrac Version P
Sludge Recirc	Packing	Wemco Torque Flow 6 / SpiralTrac Version P
Sludge	Packing	Alweiler PEC / SpiralTrac Version P
Water	Packing	Ingersoll Rand 8GT / SpiralTrac Version P

# SpiralTrac<sup>TM</sup>

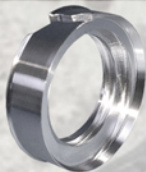
Environmental Controller



**Version P**  
For Use With Packing Only  
Greatly Reduced Flush



**Version F**  
Greatly Reduced Flush  
Easy Installation



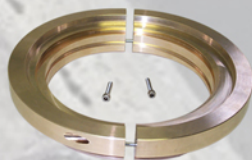
**Version N**  
Reduced or No Flush  
in Non-Fibrous Applications



**Version C**  
Reduced or No Flush  
in Chemical Applications



**Version D**  
Reduced or No Flush  
in Fibrous Applications



**SpiralTrac Seal Adaptor**  
Greatly Reduced Flush  
Easy Installation



**The Ultimate Fluid  
Sealing Solution!**