

Pump Data Sheet - HYDROMATIC

Company: Phoenix Pumps, Inc.
 Name:
 Date: 4/30/2010

Phone: 602.232.2994
 Fax: 602.232.2995
 www.PhoenixPumps.com



Pump:

Size: 30MP/MPSF
 Type: Self-Primer3
 Synch speed: 1800 rpm
 Curve: 30MP1750
 Specific Speeds:
 Dimensions:
 Speed: 1750 rpm
 Dia: 7.75 in
 Impeller:
 Ns: ---
 Nss: ---
 Suction: ---
 Discharge: 3 in

Search Criteria:

Flow: --- Head: ---

Fluid:

Water
 SG: 1
 Viscosity: 1.105 cP
 NPSHa: ---
 Temperature: 60 °F
 Vapor pressure: 0.2563 psi a
 Atm pressure: 14.7 psi a

Motor:

Standard: NEMA
 Enclosure: TEFC
 Sizing criteria: Max Power on Design Curve
 Size: 7.5 hp
 Speed: 1800
 Frame: 213T

Pump Limits:

Temperature: 140 °F
 Pressure: 125 psi g
 Sphere size: 2.5 in
 Power: ---
 Eye area: ---

---- Data Point ----

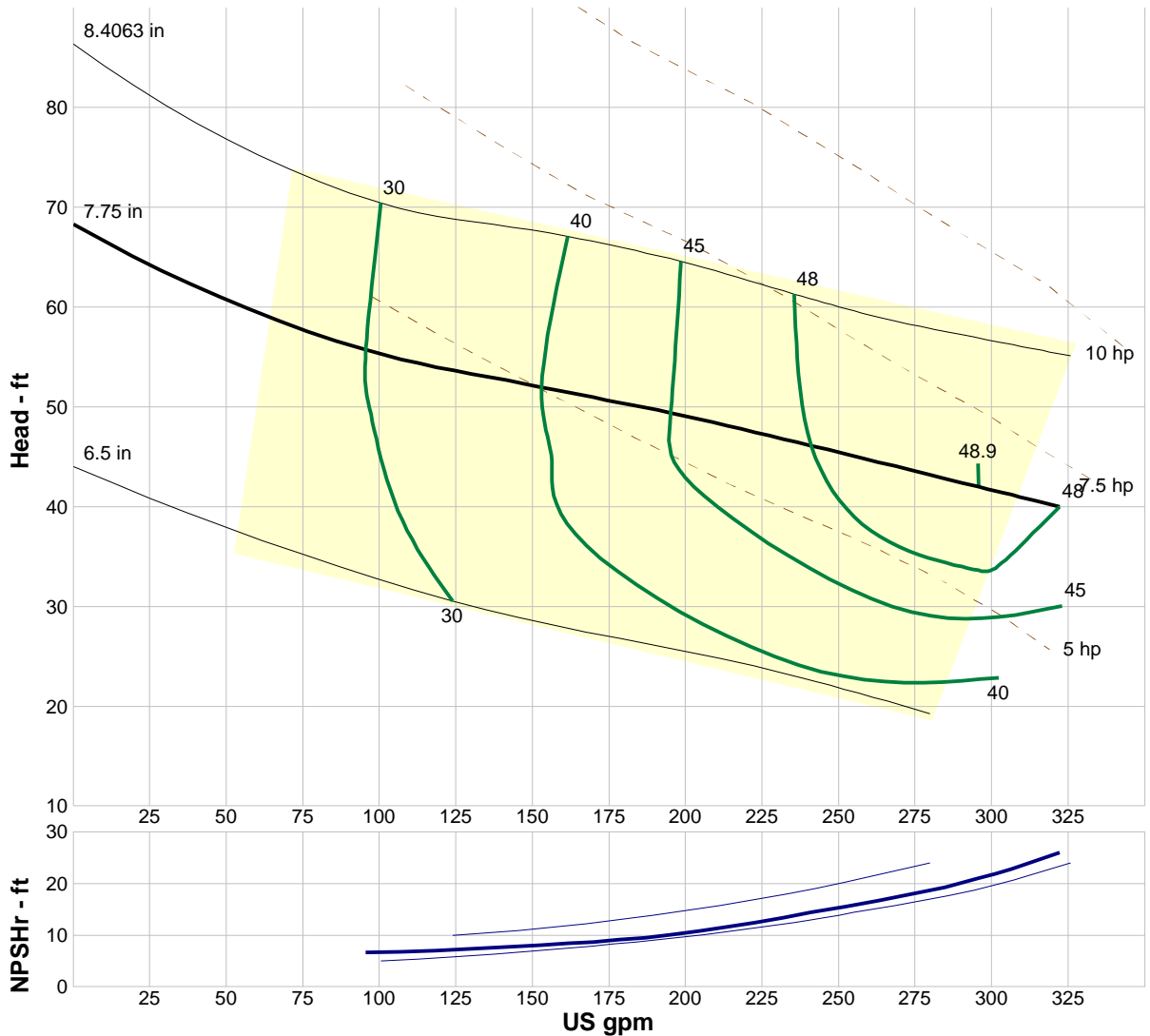
Flow: 296 US gpm
 Head: 42 ft
 Eff: 49%
 Power: 6.41 hp
 NPSHr: 21 ft

---- Design Curve ----

Shutoff head: 68.3 ft
 Shutoff dP: 29.5 psi
 Min flow: ---
 BEP: 49% @ 296 US gpm
 NOL power:
 6.78 hp @ 322 US gpm

-- Max Curve --

Max power:
 9.23 hp @ 326 US gpm



Performance Evaluation:

Flow US gpm	Speed rpm	Head ft	Efficiency %	Power hp	NPSHr ft
310	1750	40.9	48	6.61	23.7
258	1750	44.8	48	6.02	16.5
206	1750	48.6	46	5.51	11.1
155	1750	51.8	40	5.04	8.2
103	1750	55.2	31	4.55	6.83