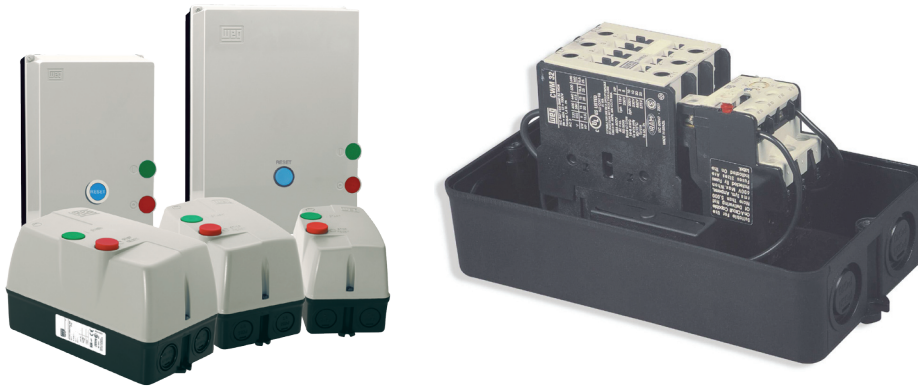


Controls

Enclosed Non-Combination Starters - PESW Series



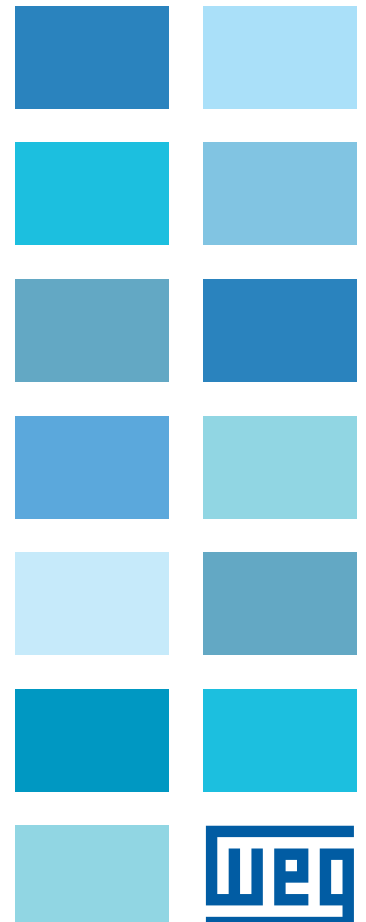
NEMA 4/4X Plastic Enclosure – Product Features

WEG offers non-reversing and non-combination NEMA-4X magnetic starter up to 75HP at 460V.

Featuring components that meet IEC design standards and UL horsepower ratings, including WEG contactors and overload relays, the PESW magnetic starters are ideal to help protect motors and ensure smooth operation year-after-year. Assembled together in a NEMA 4X enclosure

with two options out of the shelves: Start/Stop Pushbutton and RESET or just the RESET button on the cover for quick and easy operation.

WEG PESW starters are recommended for all single and three phase applications where across-the-line starters can be applied.





Controls

Enclosed Non-Combination Starters - PESW Series



Start/Stop **contacts independent** from main contactor and from thermal overload relay

Ground and Neutral
(supplied as standard)



Thermal overload relay reset integrated to the stop button up to 30Hp, 460V



**Enclosure:
NEMA 4X**



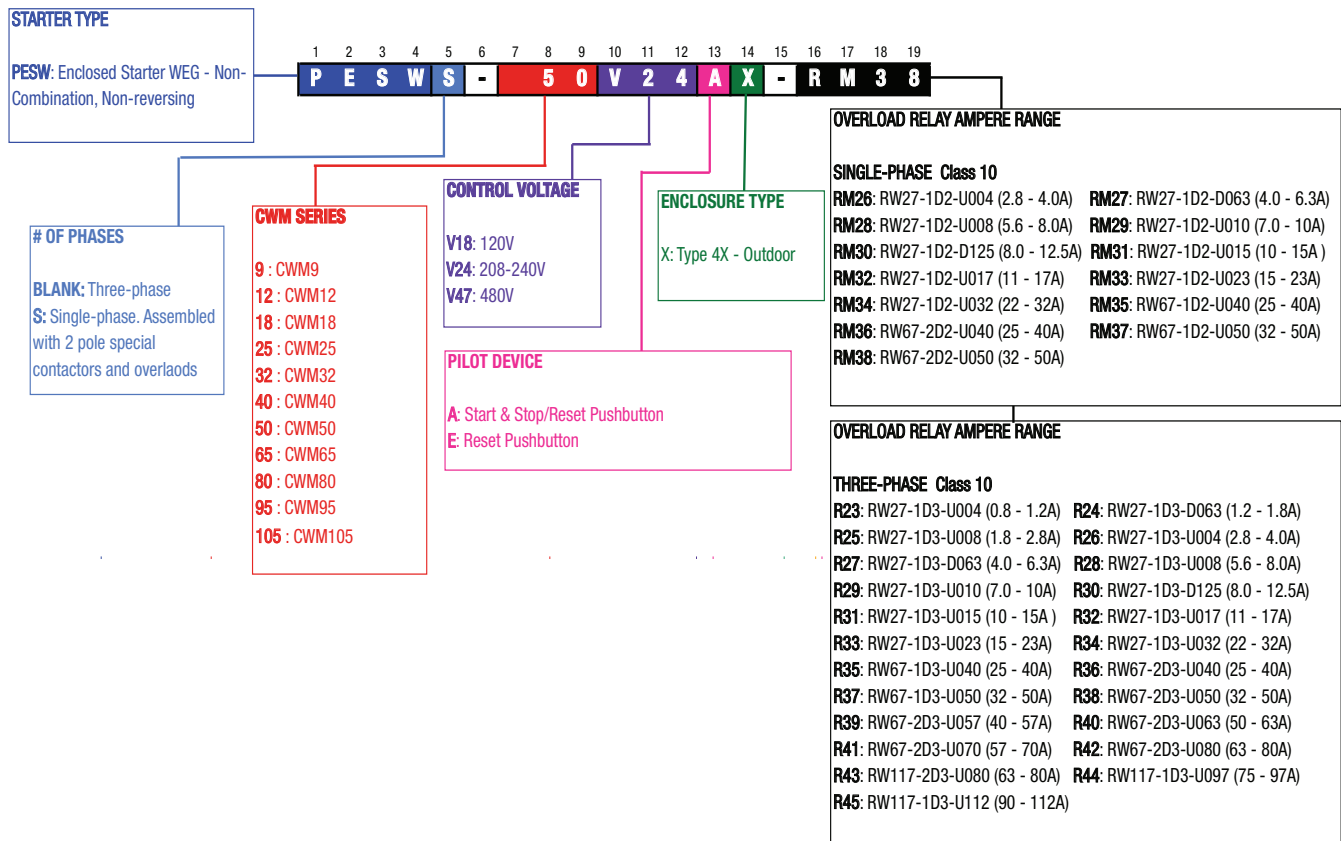
MAIN CHARACTERISTICS AND FEATURES

- High horsepower ratings in four compact sizes
- Bimetallic Overload Relays
- Adjustable trip current
- Direct heated bimetallic elements – class 10
- Ambient temperature compensated
- Phase-loss sensitivity protection
- Selectable Manual or Automatic RESET
- Electrically isolated NO-NC auxiliary contacts
- NEMA 4X polymeric enclosure with knockouts

Controls

Enclosed Non-Combination Starters - PESW Series

Catalog part number composition



Controls

Enclosed Non-Combination Starters - PESW Series



Features and Benefits

- Motor protection from overload
- Non-corrosive, outdoor, wash down rated enclosure, ready-to-go even in the harshest environments
- Conveniently pre-wired with START/STOP 3-wire control and through-the-cover overload RESET
- Easy to install and setup
- Inexpensive

Single Phase- Enclosure Type-4X									
Max. UL Horsepower		Box	Setting Range	Coil Voltage	RESET only		START/STOP + RESET		Multiplier Symbol
115V	230V				Catalog Number	List Price	Catalog Number	List Price	
-	1/2	04	2.8 - 4.0	208-240	PESWS-9V24EX-RM26	\$140	PESWS-9V24AX-RM26	\$155	Z3
-	3/4	04	4.0 - 6.3	208-240	PESWS-9V24EX-RM27	\$140	PESWS-9V24AX-RM27	\$155	Z3
1/3	1	04	5.6 - 8.0	120	PESWS-9V18EX-RM28	\$140	PESWS-9V18AX-RM28	\$155	Z3
				208-240	PESWS-9V24EX-RM28		PESWS-9V24AX-RM28		
1/2	-	04	7.0 - 10	120	PESWS-9V18EX-RM29	\$140	PESWS-9V18AX-RM29	\$155	Z3
-	1-1/2	04	8.0 - 12.5	208-240	PESWS-9V24EX-RM30	\$140	PESWS-9V24AX-RM30	\$155	Z3
3/4	2	04	10 - 15	120	PESWS-12V18EX-RM31	\$155	PESWS-12V18AX-RM31	\$170	Z3
				208-240	PESWS-12V24EX-RM31		PESWS-12V24AX-RM31		
1	3	04	11 - 17	120	PESWS-18V18EX-RM32	\$167	PESWS-18V18AX-RM32	\$182	Z3
				208-240	PESWS-18V24EX-RM32		PESWS-18V24AX-RM32		
1-1/2	5	04	15 - 23	120	PESWS-25V18EX-RM33	\$180	PESWS-25V18AX-RM33	\$195	Z3
				208-240	PESWS-25V24EX-RM33		PESWS-25V24AX-RM33		
2	5	04	22 - 32	120	PESWS-25V18EX-RM34	\$180	PESWS-25V18AX-RM34	\$195	Z3
				208-240	PESWS-25V24EX-RM34		PESWS-25V24AX-RM34		
3	-	06	25 - 40	120	PESWS-40V18EX-RM35	\$203	PESWS-40V18AX-RM35	\$218	Z3
-	7-1/2	08	25 - 40	208-240	PESWS-50V24EX-RM36	\$311	PESWS-50V24AX-RM36	\$326	Z3
-	7-1/2	08	32 - 50	208-240	PESWS-50V24EX-RM38	\$311	PESWS-50V24AX-RM38	\$326	Z3
-	10	08	32 - 50	208-240	PESWS-65V24EX-RM38	\$372	PESWS-65V24AX-RM38	\$387	Z3

Notes:

- 1) OLR must be set with FLA of the motor
- 2) Single-phase starters are assembled with special 2-pole contactors and overload relays
- 3) Starters are pre-wired for common control circuit, ie coil voltage matched power voltage

Controls

Enclosed Non-Combination Starters - PESW Series

Three-Phase Enclosure Type - 4X											
Max. UL Horsepower				Box	Setting Range	Coil Voltage	RESET only		START/STOP + RESET		Multiplier Symbol
200V	230V	460V	575V				Catalog Number	List Price	Catalog Number	List Price	
-	1/3	1/2	-	04	0.8 - 1.2	120	PESW-9V18EX-R23	\$148	PESW-9V18AX-R23	\$163	Z3
						208-240	PESW-9V24EX-R23		PESW-9V24AX-R23		
						480	PESW-9V47EX-R23		PESW-9V47AX-R23		
-	-	1	1	04	1.2 - 1.8	120	PESW-9V18EX-R24	\$148	PESW-9V18AX-R24	\$163	Z3
						480	PESW-9V47EX-R24		PESW-9V47AX-R24		
						120	PESW-9V18EX-R25		PESW-9V18AX-R25		
1/2	3/4	1-1/2	2	04	1.8 - 2.8	208-240	PESW-9V24EX-R25	\$148	PESW-9V24AX-R25	\$163	Z3
						480	PESW-9V47EX-R25		PESW-9V47AX-R25		
						120	PESW-9V18EX-R26		PESW-9V18AX-R26		
1	1	2	3	04	2.8 - 4.0	208-240	PESW-9V24EX-R26	\$148	PESW-9V24AX-R26	\$163	Z3
						480	PESW-9V47EX-R26		PESW-9V47AX-R26		
						120	PESW-9V18EX-R27		PESW-9V18AX-R27		
1-1/2	1-1/2	3	5	04	4.0 - 6.3	208-240	PESW-9V24EX-R27	\$148	PESW-9V24AX-R27	\$163	Z3
						480	PESW-9V47EX-R27		PESW-9V47AX-R27		
						120	PESW-9V18EX-R28		PESW-9V18AX-R28		
2	2	5	-	04	5.6 - 8.0	208-240	PESW-9V24EX-R28	\$148	PESW-9V24AX-R28	\$163	Z3
						480	PESW-9V47EX-R28		PESW-9V47AX-R28		
						120	PESW-9V18EX-R29		PESW-9V18AX-R29		
3	3	-	7-1/2	04	7.0 - 10	208-240	PESW-9V24EX-R29	\$148	PESW-9V24AX-R29	\$163	Z3
						120	PESW-12V18EX-R30		PESW-12V18AX-R30		
						480	PESW-12V47EX-R30		PESW-12V47AX-R30		
5	5	10	15	04	11 - 17	120	PESW-18V18EX-R32	\$179	PESW-18V18AX-R32	\$194	Z3
						208-240	PESW-18V24EX-R32		PESW-18V24AX-R32		
						480	PESW-18V47EX-R32		PESW-18V47AX-R32		
7-1/2	7-1/2	15	-	04	15 - 23	120	PESW-25V18EX-R33	\$204	PESW-25V18AX-R33	\$219	Z3
						208-240	PESW-25V24EX-R33		PESW-25V24AX-R33		
						480	PESW-25V47EX-R33		PESW-25V47AX-R33		
10	10	20	25	06	22 - 32	120	PESW-32V18EX-R34	\$262	PESW-32V18AX-R34	\$277	Z3
						208-240	PESW-32V24EX-R34		PESW-32V24AX-R34		
						480	PESW-32V47EX-R34		PESW-32V47AX-R34		
10	15	30	-	06	25 - 40	120	PESW-40V18EX-R35	\$321	PESW-40V18AX-R35	\$336	Z3
						208-240	PESW-40V24EX-R35		PESW-40V24AX-R35		
						480	PESW-40V47EX-R35		PESW-40V47AX-R35		
15	15	30	40	08	32 - 50	120	PESW-50V18EX-R38	\$564	PESW-50V18AX-R38	\$579	Z3
						208-240	PESW-50V24EX-R38		PESW-50V24AX-R38		
						480	PESW-50V47EX-R38		PESW-50V47AX-R38		
20	20	40	50	08	40 - 57	120	PESW-65V18EX-R39	\$589	PESW-65V18AX-R39	\$604	Z3
						208-240	PESW-65V24EX-R39		PESW-65V24AX-R39		
						480	PESW-65V47EX-R39		PESW-65V47AX-R39		
-	25	50	60	08	57 - 70	120	PESW-80V18EX-R41	\$635	PESW-80V18AX-R41	\$650	Z3
						208-240	PESW-80V24EX-R41		PESW-80V24AX-R41		
						480	PESW-80V47EX-R41		PESW-80V47AX-R41		
25	30	60	75	10	63 - 80	120	PESW-95V18EX-R43	\$1,085	PESW-95V18AX-R43	\$1,100	Z3
						208-240	PESW-95V24EX-R43		PESW-95V24AX-R43		
						480	PESW-95V47EX-R43		PESW-95V47AX-R43		
30	-	75	-	10	75 - 97	120	PESW-105V18EX-R44	\$1,184	PESW-105V18AX-R44	\$1,199	Z3
						208-240	PESW-105V24EX-R44		PESW-105V24AX-R44		
						480	PESW-105V47EX-R44		PESW-105V47AX-R44		
-	40	-	-	10	90 - 112	120	PESW-105V18EX-R45	\$1,184	PESW-105V18AX-R45	\$1,199	Z3
						208-240	PESW-105V24EX-R45		PESW-105V24AX-R45		

Notes:

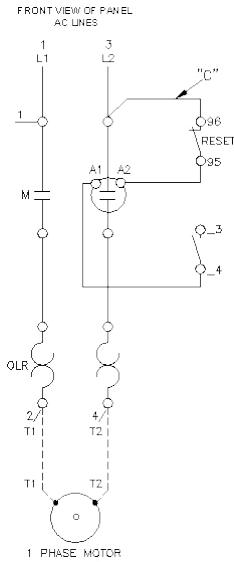
- 1) OLR must be set with FLA of the motor
- 2) 3-phase starters with 120V coil are wired for separate control
- 3) 3-phase starters can be wired for single-phase applications
- 4) 575V starters are available only with 120V coil

Controls

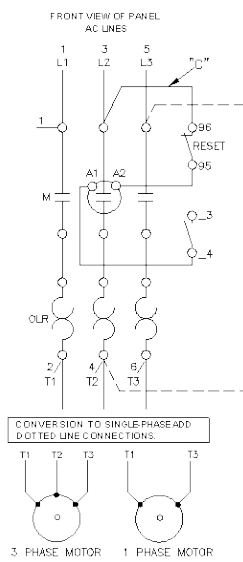
Enclosed Non-Combination Starters - PESW Series

WIRING DIAGRAM

Single-phase Starter



Three-phase Starter

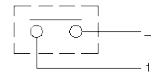


Separate Control

Remove wire "C" if supplied and connect separate control lines to the n°1 terminal on the pilot device as shown below and to the n° 96 terminal on the overload relay.

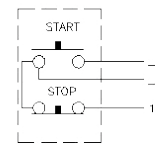
Pilot Devices

2 WIRE CONTROL



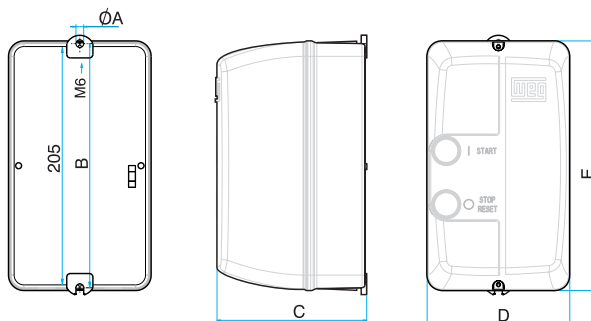
NOT FOR USE WITH AUTO RESET OL RELAYS.

3 WIRE CONTROL



DIMENSIONS

SIZE 04 mm (in)	mm(in)	SIZE 06 mm (in)	mm (in)	SIZE 08 mm (in)	mm (in)	SIZE 10 mm (in)	mm (in)
øA = 4.5 (0.2)		øA = 6.5 (0.3)		øA = 6.0 (0.2)		øA = 7.0 (0.3)	
B = 180 (7.1)		B = 205 (8.1)		B = 275 (10.8)		B = 355 (14.0)	
C = 111 (4.4)		C = 126 (5.0)		C = 143 (5.6)		C = 167 (6.6)	
D = 105 (4.1)		D = 120 (4.7)		D = 180 (7.1)		D = 250 (9.9)	
E = 185 (7.3)		E = 210 (8.3)		E = 280 (11.0)		E = 360 (14.2)	



Provision for cable gland fitting	Standard		
	Top	Bottom	Back
Size 04	2 x 1/2"	2 x 1/2"	ø18mm (0.7in)
Size 06	2 x 1/2" and 3/4"	2 x 1/2" and 3/4"	ø22mm (0.9in)
Size 08	2 x 3/4" and 1"	2 x 3/4" and 1"	-
Size 10	2 x 3/4" and 1"	2 x 3/4" and 1"	-
	1 x 1" and 1 1/4"	1 x 1" and 1 1/4"	-

For wall mounting on starters size 08 and 10, four screws with the following characteristics should be used:

- Pan, dome or rounded shaped head;
- Starter size 08:
 - Screws size 1/4 (or M6 – ISO Standard);
 - Dimensions: diameter thread shall be maximum 1/4 in and diameter head shall be maximum 15/64 in.
- Starter size 10:
 - Screws size 1/2 (or M5 – ISO Standard);
 - Dimensions: diameter thread shall be maximum 0.236 in and diameter head shall be maximum 0.394 in.