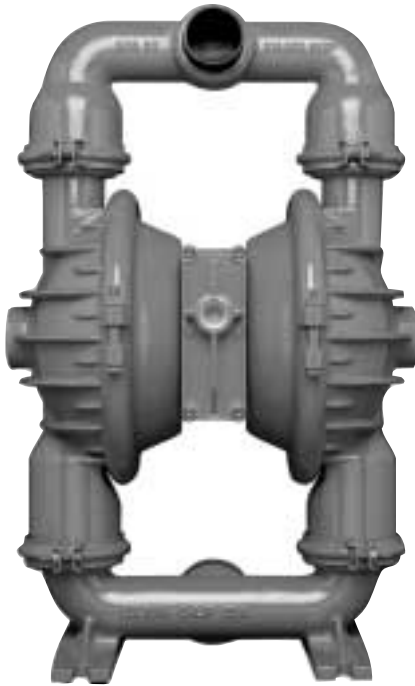


WILDEN®

A **DOVER** RESOURCES COMPANY



PROFLO™
PROGRESSIVE PUMP TECHNOLOGY

P15 Metal Pump

FLOW RATE TO 919 LPM (242.7 GPM)

MAXIMUM OPERATING PRESSURE = 8.6 BAR (125 PSI)

Specifications

WETTED HOUSINGS (Water Chambers and Manifolds)

MATERIAL	SHIP WT.	MATERIAL	SHIP WT.
Aluminum	59.9 kg. (132 lbs.)	Cast Iron	98.0 kg. (216 lbs.)
316 S.S.	89.8 kg. (198 lbs.)	Hastelloy	111.6 kg. (246 lbs.)

NON-WETTED HOUSINGS

DESCRIPTION	MATERIAL
Center Block	Aluminum, Teflon® Coated
Air Chambers	Aluminum, Stainless Steel, Teflon® Coated
Air Valve	Polypropylene

MAXIMUM SUCTION LIFT CAPABILITY

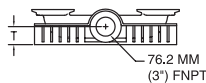
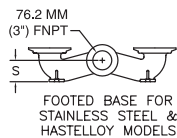
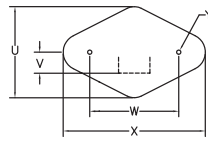
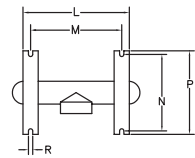
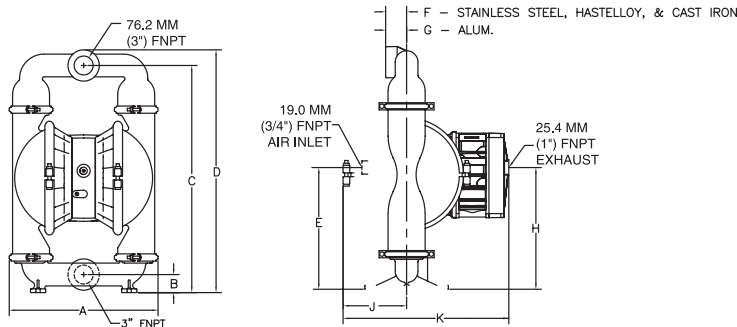
DRY LIFT
6.7 m (22.1')
The above figure represents the rubber-fitted pump capability.

MAXIMUM DIAMETER SOLIDS

9.53 mm (3/8") Diameter

ELASTOMER OPTIONS

MATERIAL	TEMPERATURE LIMITS		
Polyurethane	-12.2 (+10)	to	65.6 (+150) C° (F°)
Neoprene	-17.8 (0)	to	93.3 (+200) C° (F°)
Buna-N®	-12.2 (+10)	to	82.2 (+180) C° (F°)
Nordel®	-51.1 (-60)	to	137.8 (+280) C° (F°)
Viton®	-40.0 (-40)	to	176.7 (+350) C° (F°)
Saniflex™	-28.9 (-20)	to	104.4 (+220) C° (F°)
Teflon® PTFE	4.4 (+40)	to	104.4 (+220) C° (F°)
Wil-Flex™	-40.0 (-40)	to	107.2 (+225) C° (F°)

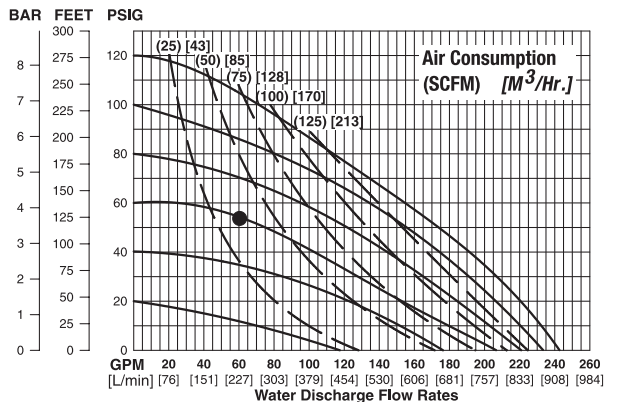


DIMENSIONS - P15 METAL

ITEM	METRIC (mm)	STANDARD (inch)
A	505.7	19.91
B	59.4	2.34
C	761.2	29.7
D	822.5	32.38
E	391.4	15.41
F	71.4	2.81
G	68.3	2.69
H	405.6	15.97
J	215.9	6.50
K	522.2	20.56
L	360.4	14.19
M	304.8	12.00
N	258.1	10.16
P	281.7	11.09
R	16.0	0.63
S	71.4	2.81
T	65.8	2.59
U	305.6	12.03
V	42.9	1.69
W	305.6	12.03
X	476.3	18.75
Y	16.0	0.63

BSP threads available for liquid inlet and discharge.
Refer to the EOM manual for TPE and Ultra-Flex™ performance curves.

RUBBER-FITTED P15 METAL PUMP



TEFLON®-FITTED P15 METAL PUMP

