

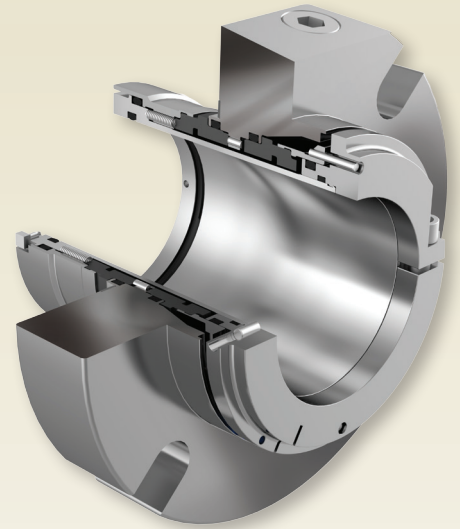
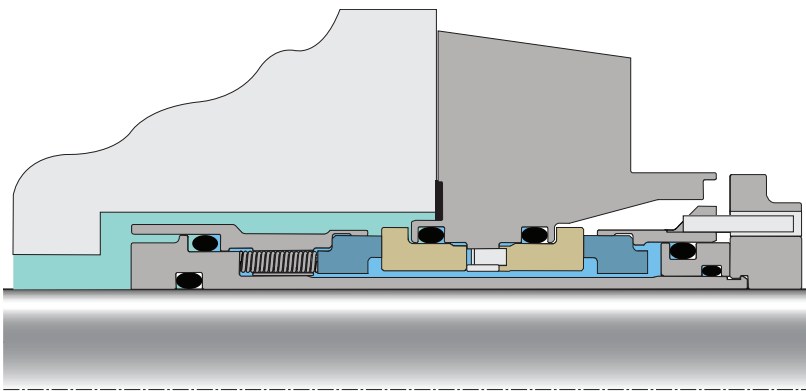
250L

Cartridge Dual Seal with Clamp Lock Ring

Exceptional Seal Reliability Combined with Easy Installation Features

The 250L cartridge dual seal is designed to fit ANSI pumps used in lower duty chemical processes such as ethanol grain processing. The 250 dual seal provides sealing security that conventional single seals cannot match. A durable back-up seal provides the opportunity for scheduled maintenance, thereby avoiding unplanned downtime and production losses.

The 250L features a clamp style lock ring that allows for the easiest installation and prevents sleeve damage associated with conventional lock rings.



Simplicity and Ease of Installation

- Clamp lock ring with single screw tightening
- Internal centering clips with no removal necessary
- Cartridge design

Reliable Sealing with Optimal Performance

- Enhanced barrier and fluid flow, providing better face cooling
- Dual seal offers back-up seal that helps to avoid unscheduled shutdowns due to seal failures associated with single seal failures

SPECIFICATIONS

Operating Parameters

Sizes	1.125" to 3.750"
Pressure*	Up to 6.9 bar g (100 psig)
Temperature**	To 205°C (400°F)
Speed	Max. 3600 rpm

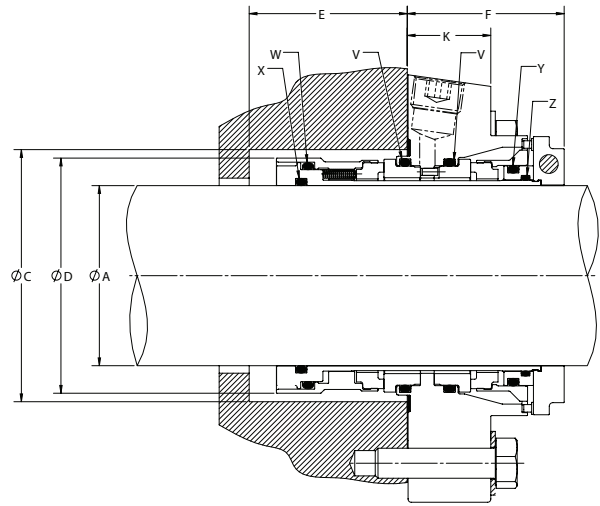
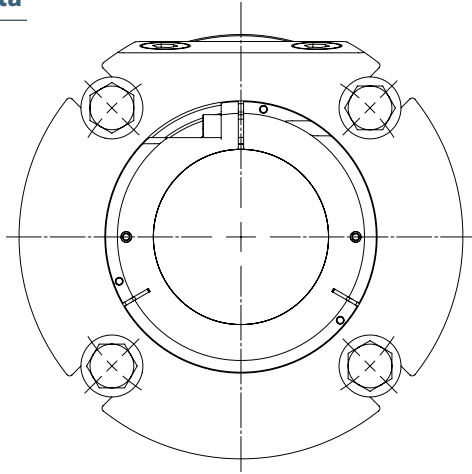
Materials of Construction

Faces	CB SC
Elastomers	FKM EPDM FEPM FFKM
Metal Parts	316 Stainless Steel / EN 1.4401
Springs	EN 2.4819 (Alloy C-276)

*Seal pressure capabilities are dependent on the fluid sealed, temperature, speed, and seal face combinations. Consult Chesterton Engineering for applications exceeding published operating parameters, and for additional seal sizes

**Above 150°C (300°F) consult Chesterton Engineering for elastomer options suitable for higher temperatures

Dimensional Data



SEAL SIZE	SHAFT SIZE	Gland OD	Stuffing Box Bore		Seal OD	SB Depth	OB Length	Bolt Circle by Bolt Size			Slot Width	SB to Bolt Surface	Port Size	O-RINGS				
	A	B	C	C	D	E	F	G MIN			H	J	P	V	W	X	Y	Z
		MAX	MIN	MAX	MAX	Nominal	Nominal	0.375	0.500	0.625	MIN	MAX						
1.125	1.125"	4.11	1.77	2.01	1.73	1.63	1.97	3.29			0.43	1.100	1/4-18 NPT	129	124	125	028	122
1.125	1.125" OS	4.48	1.77	2.81	1.73	1.56	2.04	4.17			0.43	1.170	1/4-18 NPT	129	124	125	028	122
1.375	1.375"	4.48	2.02	2.32	1.98	1.63	2.01	3.96			0.43	1.120	1/4-18 NPT	132	030	126	129	128
1.375	1.375" OS	5.23	2.02	3.19	1.98	1.63	1.97	4.54			0.43	1.120	1/4-18 NPT	132	030	126	129	128
1.750	1.750"	5.48	2.53	2.81	2.48	1.58	2.13	4.54	4.67		0.56	1.000	3/8-18 NPT	138	134	137	132	139
1.750	1.750" OS	6.63	3.39	3.75	3.33	1.58	2.13	5.92	6.04		0.56	1.000	3/8-18 NPT	138	134	137	132	139
1.875	1.875"	5.48	2.66	2.94	2.60	1.58	2.13	4.17			0.43	1.000	3/8-18 NPT	138	140	134	136	141
1.875	1.875" OS	6.75	2.66	3.81	2.60	1.58	2.13	6.42	6.54		0.56	1.000	3/8-18 NPT	138	140	134	136	141
2.000	2.000"	5.48	2.78	3.19	2.73	1.58	2.13	4.67	4.79		0.56	1.000	3/8-18 NPT	143	142	136	141	138
2.125	2.125"	5.48	2.91	3.44	2.85	1.58	2.13	4.92	5.04		0.56	1.000	3/8-18 NPT	140	138	144	145	143
2.125	2.125" OS	6.98	3.77	4.33	3.71	1.58	2.13	5.67	5.79	5.92	0.71	1.000	3/8-18 NPT	140	138	144	145	143
2.250	2.250"	5.98	3.03	3.56	2.98	1.58	2.13	5.34	5.46		0.56	1.000	3/8-18 NPT	147	142	145	140	146
2.500	2.500"	6.73	3.28	3.81	3.23	1.61	2.10	5.17	5.29	5.42	0.71	1.000	3/8-18 NPT	150	149	146	145	151
2.500	2.500" OS	7.98	4.39	5.14	4.33	1.64	2.07	6.42	6.54	6.67	0.71	1.000	3/8-18 NPT	150	149	146	145	151
2.625	2.625"	6.44	3.41	4.25	3.35	1.58	2.13	5.73	5.86		0.65	1.000	3/8-18 NPT	150	148	146	151	151
2.625	2.625" OS	7.73	3.41	4.94	3.35	1.64	2.07	6.42	6.54	6.67	0.71	1.000	3/8-18 NPT	150	148	146	151	151
3.000	3.000"	7.61	4.04	4.25	3.98	2.25	2.73	6.67	6.79	6.92	0.74	1.410	1/2-14 NPT	240	152	237	238	234
3.000	3.000" OS	9.45	4.04	5.39	3.98	2.22	2.77	7.67	7.79	7.92	0.74	1.410	1/2-14 NPT	240	152	237	238	234
3.375	3.375"	7.98	4.42	5.19	4.36	2.14	2.85	7.11	7.24	7.36	0.80	1.410	1/2-14 NPT	153	237	241	243	240
3.750	3.750"	8.71	4.79	5.11	4.73	2.25	2.73	7.42	7.54	7.67	0.74	1.410	1/2-14 NPT	245	155	240	243	244

**1.125" & 1.875" Standard Bore bolts should be socket head cap screws (SHCS) to avoid interference with lock ring OD (hex bolts should not be used for these two sizes).

SEAL SIZE	Min. BC w/SHCS	Min. BC w/Hex
**1.125"	2.875	2.869
**1.875"	3.750	3.772

Chesterton ISO certificates available on www.chesterton.com/corporate/iso

Distributed by:

Technical data reflects results of laboratory tests and is intended to indicate general characteristics only. A.W. Chesterton Company disclaims all warranties express or implied, including warranties of merchantability and fitness for a particular purpose. Liability, if any, is limited to product replacement only. Any images contained herein are for general illustrative or aesthetic purposes only and are not intended to convey any instructional, safety, handling or usage information or advice respecting any product or equipment. Please refer to relevant Safety Data Sheets, Product Data Sheets, and/or Product Labels for safe use, storage, handling, and disposal of products, or consult with your local Chesterton sales representative.

© 2017 A.W. Chesterton Company
 ® Registered trademark owned by A.W. Chesterton Company
 in USA and other countries, unless otherwise noted.