

Machine Tool Tank Units and Accessories



A RUTHMAN COMPANY
www.gusher.com



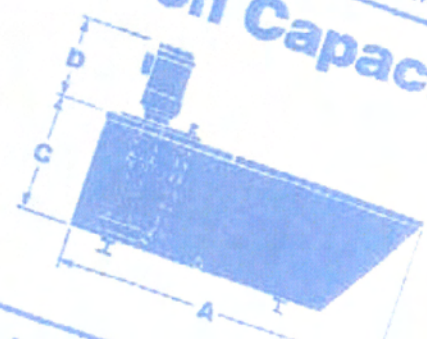
GUSH



DIMENSIONS (Inches)

CAPACITY (GAL)	PUMP	HP
80	1102P long + S	3/4
80	CM-Long	1
80	UD-Long	3/4
80	UD-Long	1
100	RL-Long	1 1/2
100	RL-Long	2

100 to 200 Gallon Capacity



Quality Pressure

HP	RPM	DISCHARGE	PERFORMANCE
1 1/2	3450	1 1/4	
	3450	1 1/2	

Model	Flow (GPM)	Pressure (PSI)	Capacity (GAL)
2218-B	40	27 1/4	15
2218-B	58	27 1/4	15
2218-B	68	27 1/4	15
2218-A	40	27 1/4	15
2218-A	58	27 1/4	15
2218-A	70	27 1/4	15
2216-EL5WA	30	27 1/4	15
2216-EL5WA	110	27 1/4	15
2216-EL5WA	10	27 1/4	15



GUSHER[®]

MACHINE TOOL TANK UNITS

These general purpose units are widely used for supplying coolant to machine tools not otherwise equipped with a coolant system. Available in standard reservoir sizes from 10 to 200 gallon with pumps from 1/25 through 7½ hp, Gusher tank units may be used as permanent, portable or auxiliary coolant systems.

The rugged Gusher immersible pump provides instantaneous coolant flow which may be throttled partially or completely without overloading the motor. There are no bearings, seals or metal-to-metal contact within the pump itself, thereby permitting an efficient, continuous flow of grit and abrasive laden coolant.

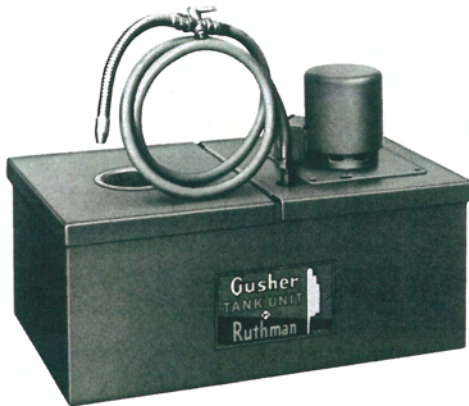
The reservoir is fabricated of reinforced, heavy gauge hot rolled steel for industrial use and extended service. All units feature an extra heavy

gauge, split lid design to facilitate cleaning without disassembly.

The standard models shown are sized to suit a wide range of applications. Custom models are available to suit specific needs or unusual requirements.

All models are furnished with pump and motor mounted on the reservoir complete with internal plumbing. Models T-10-CB, T-21-CB and T-38-CB feature built-in chip baskets as standard. Chip baskets and baffle units are offered optionally on other models.

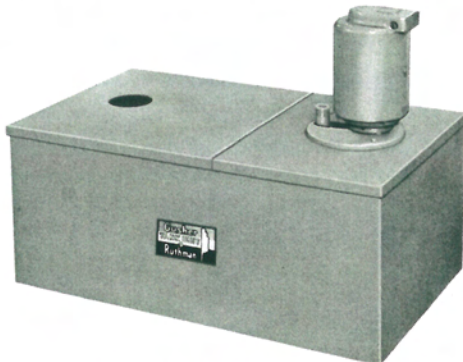
When ordering, specify standard model number, electrical characteristics and accessories desired. Standard electrics are detailed on the price sheet; other electrical characteristics will be quoted on request.



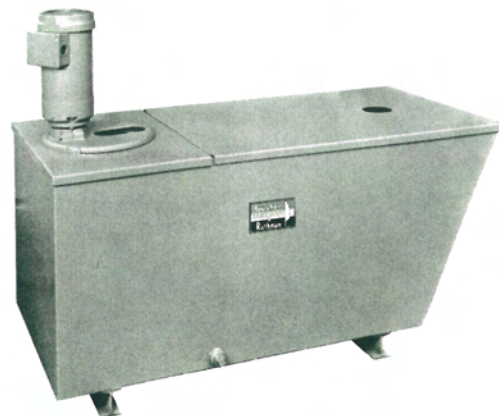
Gusher Model T-10M, shown with optional hose and nozzle assembly, typifies the standard tank unit design. Swivel casters are also available optionally on models thru T-80F for added portability.



Gusher Models T-10-CB, T-21-CB (shown) and T-38-CB are furnished complete with chip basket, hose, nozzle and valve assembly. (Optional on all other models)



The split lid design, shown here on the Model T-50, is furnished as standard on all models except CB styles. On models T-80 and larger, the reservoir is angled to permit chip removal with a shovel or hoe.

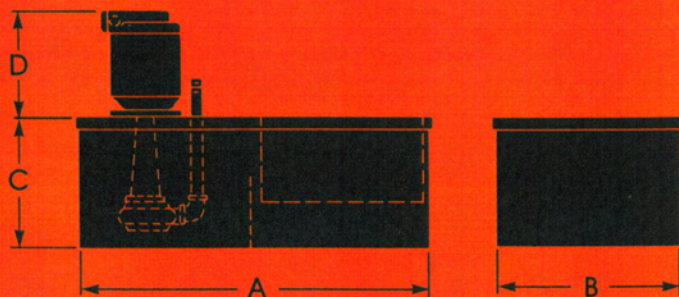


I-beam legs are furnished as standard on Models T-100 thru T-200-C to facilitate relocation via fork lift.

MODELS 10 to 21 GALLON CAPACITY



Shown with optional chip basket

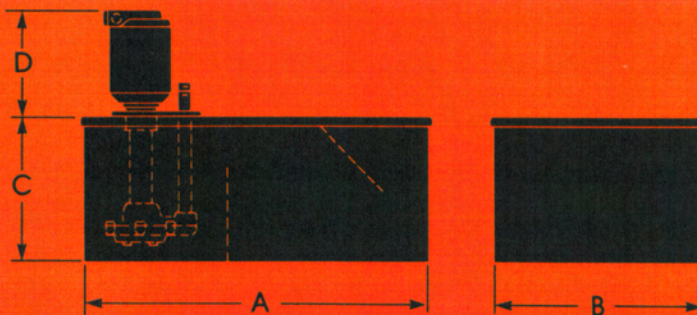
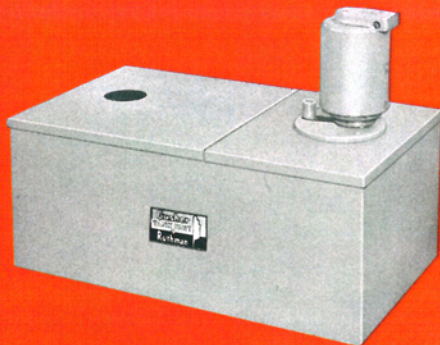


TANK DIMENSIONS (Inches)

TANK UNIT	CAPACITY (GAL.)	PUMP	HP	RPM	DISCHARGE	PERFORMANCE				IMPELLER	A LENGTH	B WIDTH	C HEIGHT	D MOTOR
						Ft. Hd. GPM	4	6	8					
T-10M	10	IP3 long	1/25	3000	3/8	4 9	6 8	8 6	10 3	6055-2	20	12	10	49/16
T-10	10	IP3 long	1/10	3450	1/2	2 21	8 18	12 12	14 7	6055	20	12	10	7 3/4
T-10-CB*	10	IP3 long	1/10	3450	1/2	2 21	8 18	12 12	14 7	6055	20	12	10	7 3/4
T-16A	16	IP3 long	1/10	3450	1/2	2 21	8 18	12 12	14 7	6055	26 3/4	14 1/2	10	7 3/4
T-16B	16	9025 long	1/4	3450	3/4	5 32	18 25	25 15	32 5	6081	26 3/4	14 1/2	10	8 11/16
T-21-CB*	21	9025 long	1/4	3450	3/4	5 32	18 25	25 15	32 5	6081	36	16	9 3/4	8 11/16
T-21A	21	9040 long	1/2	3450	3/4	13 28	24 20	31 12	34 4	6061-DL	36	16	9 3/4	11 1/16

*Note: Models T-10-CB and T-21-CB furnished complete with chip basket, hose, nozzle and valve assembly. Optional on all other models.

MODELS 32 to 50 GALLON CAPACITY

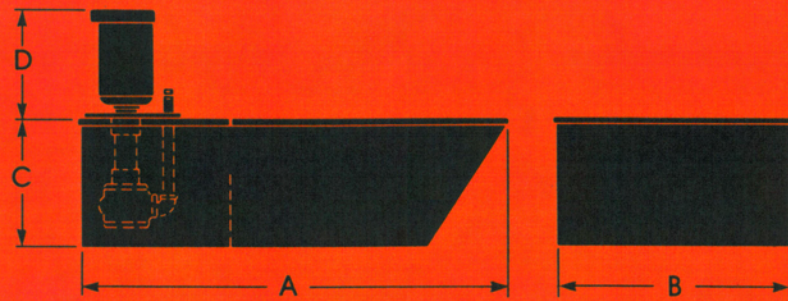
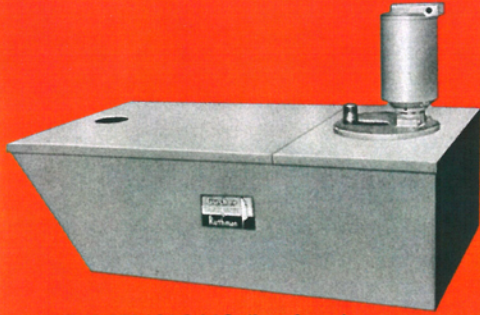


TANK DIMENSIONS (Inches)

TANK UNIT	CAPACITY (GAL.)	PUMP	HP	RPM	DISCHARGE	PERFORMANCE				IMPELLER	A LENGTH	B WIDTH	C HEIGHT	D MOTOR
						Ft. Hd. GPM	6	15	19					
T-32	32	RL-xlong	1/3	1725	1	6 50	15 35	19 20	23 5	2218	36	15	15	9 3/4
T-32A	32	9040 xlong	1/4	1725	3/4	4 32	10 22	13 15	15 4	6061	36	15	15	10 1/8
T-32E	32	RL-xlong	1/2	1725	1	15 50	22 33	24 20	27 5	2216-K	36	15	15	11 3/4
T-38CB*	38	RL-xlong	1/2	1725	1	15 50	22 33	24 20	27 5	2216-K	37 3/4	14 3/4	16	11 3/4
T-38A	38	UD-xlong	3/4	3450	1	5 70	27 50	38 30	47 10	2217-S	37 3/4	14 3/4	16	11 3/4
T-50	50	RL-xlong	1/2	1725	1	15 50	22 33	24 20	27 5	2216-K	36	21 5/8	15	11 3/4
T-50D	50	UD-xlong	1/2	3450	1	5 50	14 47	30 26	37 8	2217-B	36	21 5/8	15	11 3/4
T-50E	50	UD-xlong	3/4	3450	1	5 70	27 50	38 30	37 2	2217-S	36	21 5/8	15	11 3/4
T-50F	50	UD-xlong	1	3450	1	20 75	44 52	50 35	68 5	2218-B	36	21 5/8	15	10 3/4

*Note: Model T-38-CB furnished complete with chip basket, hose, nozzle and valve assembly. Optional on all other models.

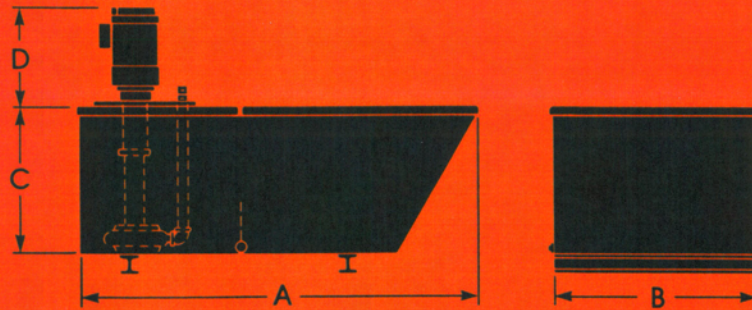
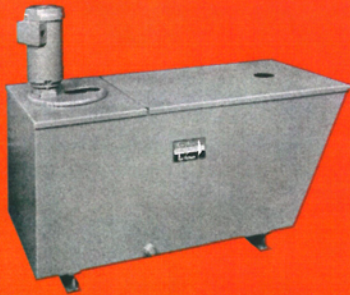
MODELS 80 GALLON CAPACITY



TANK DIMENSIONS (Inches)

TANK UNIT	CAPACITY (GAL.)	PUMP	HP	RPM	DISCHARGE	PERFORMANCE				IMPELLER	A LENGTH	B WIDTH	C HEIGHT	D MOTOR	
						Ft. Hd.	3	19	27						30
T-80	80	11029 long + 5	¾	1725	1¼	GPM	93	60	30	8	2292-ETN	50	27¾	15	13 ³ / ₁₆
T-80-B	80	CML-long	1	1725	2	Ft. Hd.	5	11	17	22	2041-G	50	27¾	15	13 ³ / ₈
T-80C	80	UD-xlong	¾	3450	1	GPM	70	50	38	47	2217-S	50	27¾	15	10¾
T-80D	80	UD-xlong	1	3450	1	Ft. Hd.	20	44	50	68	2218-B	50	27¾	15	10¾
T-80E	80	RL-xlong	1½	3450	1¼	GPM	125	80	58	70	2218-A	50	27¾	15	13 ³ / ₈
T-80F	80	RL-xlong	2	3450	1¼	Ft. Hd.	40	58	95	110	2216-EL5WA	50	27¾	15	13 ³ / ₈
						GPM	68	60	30	10					

MODELS 100 to 200 GALLON CAPACITY



TANK DIMENSIONS (Inches)

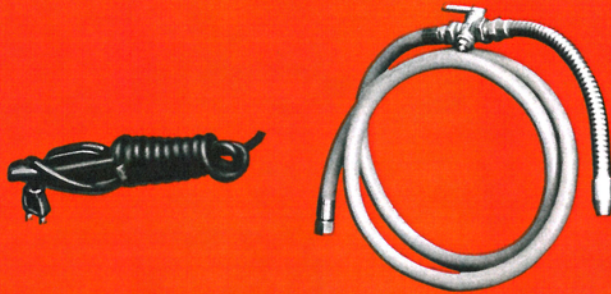
TANK UNIT	CAPACITY (GAL.)	PUMP	HP	RPM	DISCHARGE	PERFORMANCE				IMPELLER	A LENGTH	B WIDTH	C HEIGHT	D MOTOR	
						Ft. Hd.	3	30	47						57
T-100	100	11029 long + 5	1½	3450	1¼	GPM	135	95	60	57	2292-J	62	28	15	14
T-100A	100	11029 long + 5	2	3450	1¼	Ft. Hd.	3	30	47	57	2292-J	62	28	15	14
T-100B	100	11029 long + 5	3	3450	1¼	GPM	180	120	60	68	2292-DL	62	28	15	14
T-100C	100	11029 long + 5	5	3450	1¼	Ft. Hd.	29	57	80	100	2292-C	62	28	15	14
T-150	150	29718 long	1½	3450	1¼	GPM	135	95	60	57	2292-J	60	28	24	13¼
T-150A	150	29718 long	2	3450	1¼	Ft. Hd.	3	30	47	57	2292-J	60	28	24	13¼
T-150B	150	29718 long	3	3450	1¼	GPM	180	120	60	68	2292-DL	60	28	24	13¼
T-150C	150	29718 long	5	3450	1¼	Ft. Hd.	29	57	80	100	2292-C	60	28	24	13¼
T-200	200	29718 long	2	3450	1¼	GPM	135	95	60	57	2292-J	77	28	24	13¼
T-200A	200	29718 long	3	3450	1¼	Ft. Hd.	10	35	60	68	2292-DL	77	28	24	13¼
T-200B	200	29718 long	5	3450	1¼	GPM	200	150	80	100	2292-C	77	28	24	13¼
T-200C	200	29718 long	7½	3450	1¼	Ft. Hd.	22	89	117	126	2292	77	28	24	18 ⁹ / ₁₆
						GPM	210	120	60	30					

ACCESSORIES

NYLON
FITTINGS
ALSO
AVAILABLE

ELECTRICAL CABLE / SWITCH ASSEMBLY

Available only on 115/230 volt, single phase models through 1/4 hp, the assembly includes a six foot cable and in-line off/on switch. The assembly is prewired to motor and plug.



HOSE, NOZZLES AND VALVES

Priced separately, throttle valves, 12" flexible coolant nozzles and six foot neoprene hose and fittings are available for 3/8", 1/2" and 3/4" N.P.T. Hose and valves for 1" N.P.T. pipe are also available.

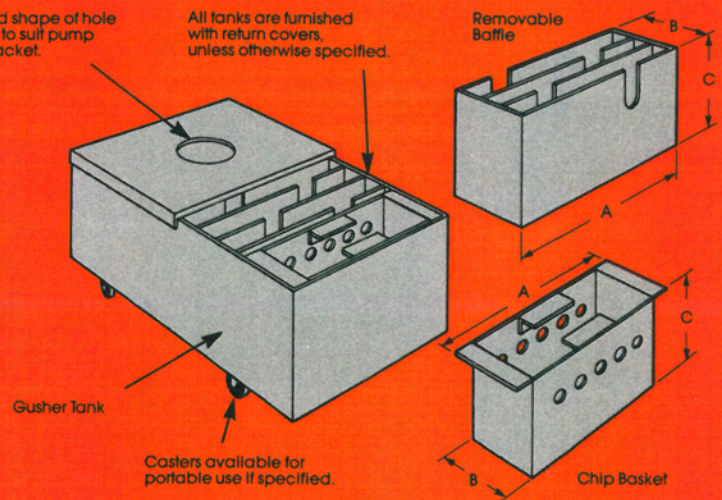
Note: Hose, nozzle and valve assembly included with models T-10-CB, T-21-CB and T-38-CB as standard.

CASTERS AND LEGS

Swivel casters or I-beam legs are optionally available on models thru T-80-F to facilitate portability. On Models T-100 thru T-200-C, the I-beam legs are included as standard equipment.

CHIP BASKETS AND BAFFLES

Gusher chip basket and baffle units are offered optionally on the models indicated to entrap virtually all grit and chips through settlement. The units are easily removed for cleaning without disassembly.



Removable Baffles

BAFFLE NUMBER	TANK CAPACITY	DIMENSIONS		
		A	B	C
B-16	16, 21	13 ⁷ / ₈ "	7"	9"
B-32	32, 38	14 ⁵ / ₈ "	9"	14"
B-50	50	21 ³ / ₈ "	11"	14"
B-80	80, 100	27 ⁵ / ₈ "	12"	14"
B-150	150, 200	27 ⁵ / ₈ "	12"	23 ¹ / ₂ "

Baffles are available optionally on all models except T-10-CB, T-21-CB and T-38-CB. On ten and sixteen gallon tank units, a baffle may be used instead of a chip basket but not in addition to a chip basket.

To select a baffle choose the baffle number according to tank capacity. Example — A B-50 baffle is used in a T-50 tank unit, however, a B-80 baffle is used in both T-80 series and T-100 tank units. B-150 baffle is used in T-150 and T-200 tank units.

Chip Baskets

BASKET NUMBER	TANK CAPACITY	DIMENSIONS		
		A	B	C
CB-10	10	11 ¹ / ₂ "	8"	6"
CB-16	16, 21	13 ³ / ₄ "	10"	6"
CB-32	32, 38	14 ¹ / ₂ "	10"	6"
CB-50	50	21 ³ / ₈ "	10"	6"
CB-80	80, 100 150, 200	27 ¹ / ₂ "	14"	6"

Chip baskets are available optionally on all models except T-10-CB, T-21-CB and T-38-CB. On these models, the chip basket is included as standard equipment. On ten and sixteen gallon tank units, a chip basket may be used instead of a baffle but not in addition to a baffle.

To select a chip basket choose the basket number according to tank capacity. Example — A CB-10 basket is used in a T-10 tank unit, however, a CB-80 basket is used in a T-80, T-100, T-150 and T-200 tank unit.

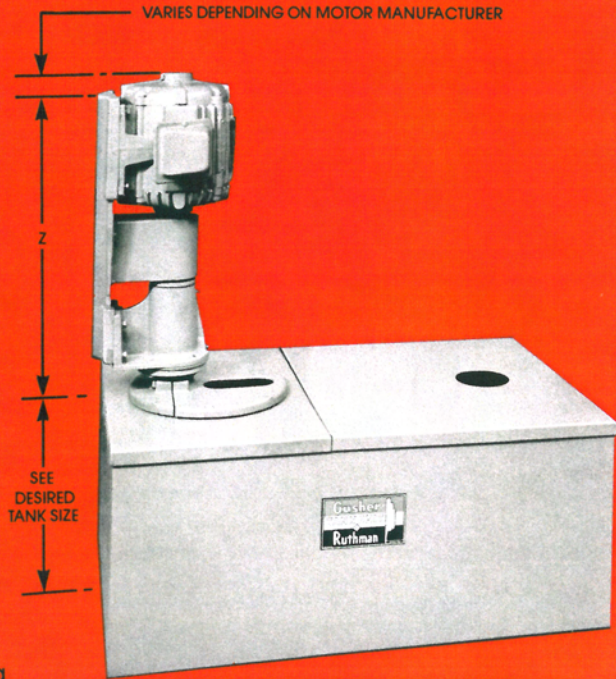
GUSHER[®]

TANK UNITS WITH STANDARD NEMA FOOT MOUNTED MOTORS

All Gusher standard tank units 1/4 hp and larger may be equipped with NEMA foot mounted motors to meet J.I.C. specifications. These units are equipped with a vertical motor base bracket and coupling.

The suffix "CM" is added to the standard model number, for example T-32-CM, and units may be purchased with or without the motor. Except as charted below, all other engineering information is the same. CM models are also available to 7 EQ specifications.

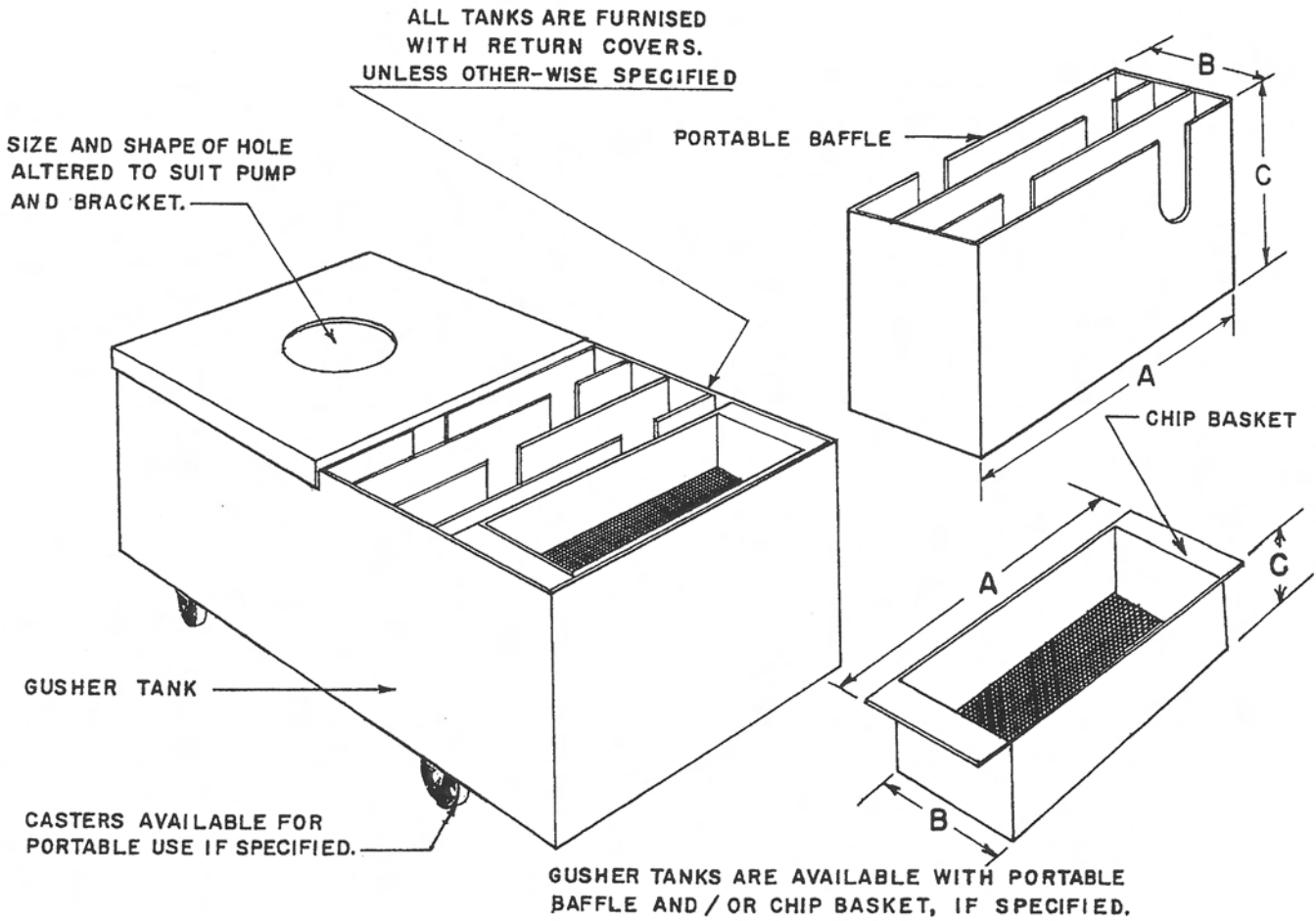
When ordering, specify model number, electrical characteristics and motor frame size. This is essential to assure proper drilling of motor mounting bracket whether or not the motor is included.



TANK UNIT	NEMA FRAME	"Z" DIMENSION (Inches)
T-16B-CM	48	14 ³ / ₄
T-21CB-CM	48	14 ³ / ₄
T-21A-CM	56	16 ¹ / ₄
T-32-CM	56	16 ¹ / ₄
T-32A-CM	56	16 ⁷ / ₁₆
T-32E-CM	56	16 ¹ / ₄
T-38CB-CM	56	16 ¹ / ₄
T-38A-CM	56	16 ¹ / ₄
T-50-CM	56	16 ¹ / ₄
T-50D-CM	56	16 ¹ / ₄
T-50E-CM	56	16 ¹ / ₄
T-50F-CM	56	16 ¹³ / ₁₆
T-80-CM	56	16 ¹ / ₄
T-80B-CM	145-T	22 ⁵ / ₁₆
T-80C-CM	56	16 ¹ / ₄

TANK UNIT	NEMA FRAME	"Z" DIMENSION (Inches)
T-80D-CM	56	16 ¹³ / ₁₆
T-80E-CM	145-T	22 ⁵ / ₁₆
T-80F-CM	145-T	22 ⁵ / ₁₆
T-100-CM	145-T	22 ⁵ / ₁₆
T-100A-CM	145-T	22 ⁵ / ₁₆
T-100B-CM	145-T	22 ⁵ / ₁₆
T-100C-CM	145-T	22 ⁵ / ₁₆
T-150-CM	143-T	22 ⁹ / ₁₆
T-150A-CM	145-T	23 ¹ / ₁₆
T-150B-CM	182-T	23 ¹⁵ / ₁₆
T-150C-CM	184-T	25
T-200-CM	145-T	23 ¹ / ₁₆
T-200A-CM	182-T	23 ¹⁵ / ₁₆
T-200B-CM	184-T	25
T-200C-CM	213-T	26 ⁷ / ₈

TANK UNITS AND ACCESSORIES



CHIP BASKET NUMBER	TANK CAPACITY	A	B	C
CB-10	10	11½"	8"	6"
CB-16	16	11¾"	10"	6"
CB-32	32	14½"	10"	6"
CB-50	50	21⅜"	10"	6"
CB-80	80, 100, 150, 200	27½"	14"	6"

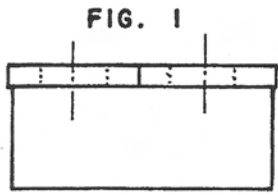
FOR EASY REMOVAL OF ACCUMULATED CHIPS AND GRIT AN OPTIONAL CHIP BASKET CAN BE FURNISHED.

PORTABLE BAFFLE NUMBER	TANK CAPACITY	A	B	C
B-16A	16	13⅞"	7"	9"
B-32	32	14⅝"	9"	14"
B-50	50	21⅜"	11"	14"
B-80	80, 100	27⅝"	12"	14"
B-150	150, 200	27⅝"	12"	23½"

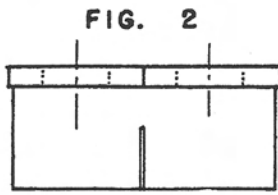
A PORTABLE BAFFLE SETTLES OUT PRACTICALLY ALL CHIPS AND GRIT FROM THE COOLANT AND ALLOWS FOR EASY REMOVAL.

GUSHER[®]

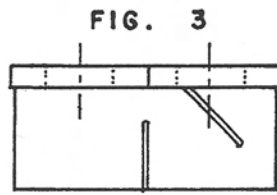
TANK UNITS AND ACCESSORIES



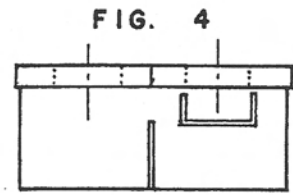
NO BAFFLE



1 BAFFLE



2 BAFFLES



1 BAFFLE
1 SETTLING TRAY