



SpiralTrac is a revolutionary environmental controller for seal and packing chambers, and has established new standards worldwide for exploiting the maximum performance potential of rotating process equipment in the mining industry.



A SpiralTrac Enhanced Environment increases the sealing element life, while decreasing flush and product leakage at the same time. Typical mining industry application areas include processing, slurry, tailings, effluent and drainage services.

Use SpiralTrac in Process Pumps from the following manufacturers:

Allis-Chalmers
ASH Pumps
Canada
Chesterton
Denver Goulds

GIW
Hazleton
Ingersoll Rand
Morris
Ramparts
Warman
Worthington

Listed below are SpiralTrac sample applications in the mining industry.

Application	Sealing Solution	Equipment / SpiralTrac Version and Type
Acid	Packing	Ramparts Acid Pump / SpiralTrac Version P
Aluminum Hydrate	Packing	Warman 12/10 GGAH / SpiralTrac Version P
Bauxite	Mechanical Seal	Worthington (various) / SpiralTrac Version N Type E
Bauxite	Mechanical Seal	Goulds 5500 (various) / SpiralTrac Version N
Bauxite	Mechanical Seal	Ingersoll Rand 8x22 LP / SpiralTrac Version N
Bauxite	Packing	Canada (various) / SpiralTrac Version P
Caustic Soda (30%)	Mechanical Seal	Durco Mk II Group II / SpiralTrac Version N
Coal Slurry	Mechanical Seal	Warman 4/3 EHH / SpiralTrac Version N Type A
Graphite	Packing	Warman EAH / SpiralTrac Version P
Gypsum	Mechanical Seal	ASH 20" 12x14 / SpiralTrac Version F Type S
Iron Ore	Mechanical Seal	Allis Chalmers SRL 5x4 / SpiralTrac Version N Type A
Lime/Silica	Packing	Goulds 5500 / SpiralTrac Version P
Phosphoric Acid (30%)	Mechanical Seal	ASH Pump (20") / SpiralTrac Version F Type S
Potash	Mechanical Seal	Morris Pump 6RX / SpiralTrac Version F Type S
Quartzite Slurry	Packing	ASH Pump B-6-5 Hydroseal / SpiralTrac Version P
Salt Cone Underflow	Mechanical Seal	Goulds Morris 35C-11 / SpiralTrac Version N
Silica Sand (40% solids)	Packing	GIW LHD 20x20x42 / SpiralTrac Version P
Tailings Slurry	Packing	Warman 12 X 10 / SpiralTrac Version P

SpiralTrac™

Environmental Controller



Version P

For Use With Packing Only
Greatly Reduced Flush



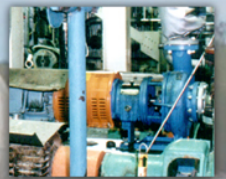
Version F

Greatly Reduced Flush
Easy Installation



Version N

Reduced or No Flush
in Non-Fibrous Applications



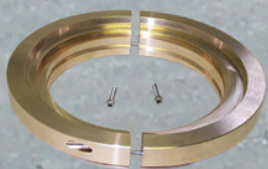
Version C

Reduced or No Flush
in Chemical Applications



Version D

Reduced or No Flush
in Fibrous Applications



SpiralTrac Seal Adaptor

Greatly Reduced Flush
Easy Installation



The Ultimate Fluid Sealing Solution!