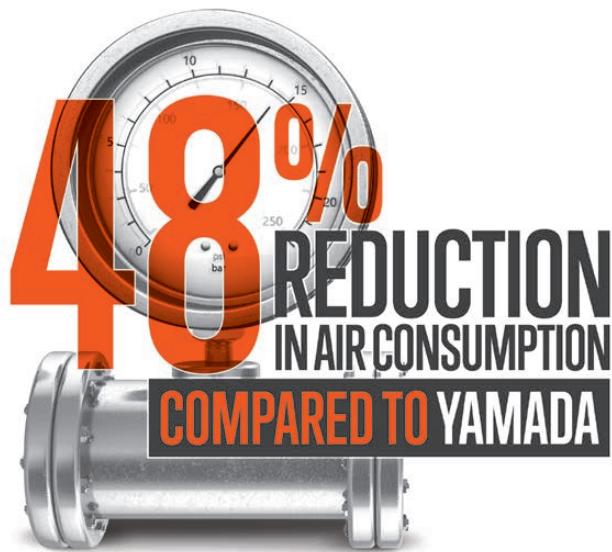


# COMPARISON CENTRAL: WILDEN vs. YAMADA

Wilden® Pro-Flo® SHIFT Metal vs. Yamada® NDP Series Metal

You be the judge! There are many AODD pumps out there. So before you buy, review the following head-to-head comparison designed to help you find the best pump suited for your application. **Wilden® Pro-Flo® SHIFT (PS)** bolted pumps outperform Yamada NDP Series pumps across all categories.



NOTE: Information based on published data for the 51 mm (2") Pro-Flo SHIFT bolted metal pump vs Yamada NDP Series metal pump for 530 lpm at 0.69 bar (140 gpm at 10 psig)

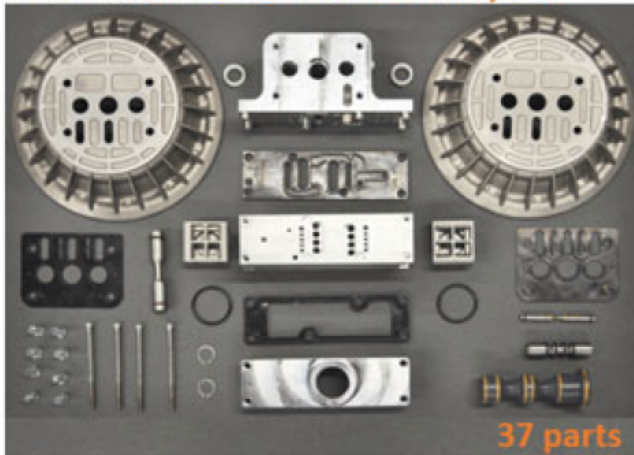
**DON'T BELIEVE US? FLIP OVER TO SEE THE DATA!**

**WILDEN®**



## Has Fewer Parts

**Pro-Flo SHIFT 2" Air Distribution System**



**37 parts**

**VS**

**Yamada 2" Air Distribution System**



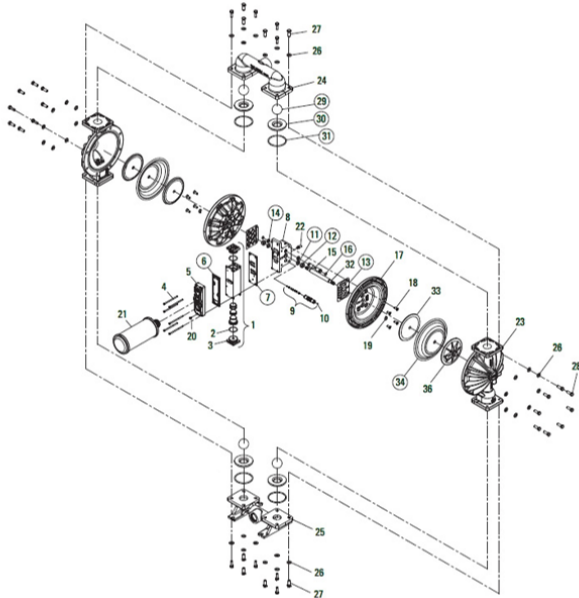
**103 parts**

## Ease Of Maintenance

### FIT Parts vs YAMADA Parts

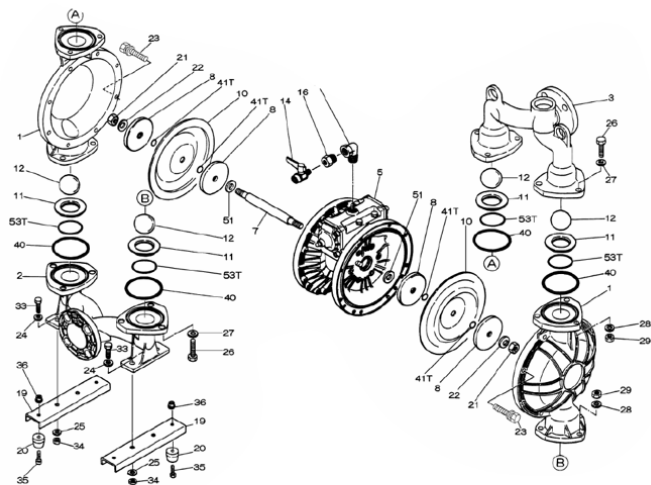
**WILDEN 2" Aluminum PS830 Pro-Flo Shift**

**134 Parts**



**YAMADA 2" Metal NDP-50**

**228 Parts**



All information gathered and represented is published Yamada performance data found in the Yamada Product Specification Guide. Yamada® Pumps is a registered trademark of the Yamada Corporation. <https://www.yamadapump.com/>



Order Online

**WILDEN®**

PSG

22069 Van Buren Street, Grand Terrace, CA 92313-5651

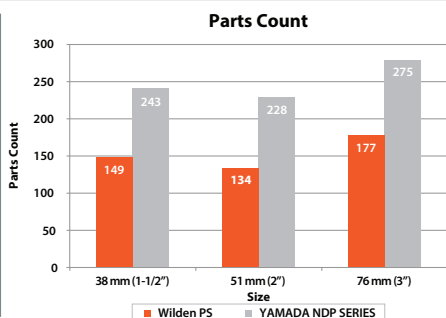
P: +1 (909) 422-1730 • F: +1 (909) 783-3440

[wildenpump.com](http://wildenpump.com)

Authorized PSG® Partner:

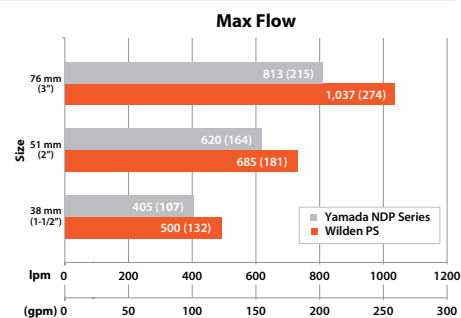
# COMPARISON CENTRAL: WILDEN vs. YAMADA

## PARTS COUNT



**BENEFITS:** Wilden PS pumps have fewer parts than Yamada NDP Series pumps, which means that there is a decreased chance of part failure, decreased downtime and increased savings on parts.

## MAX FLOW



**BENEFITS:** Wilden PS pumps have a higher flow rate than Yamada NDP Series pumps! PS pumps can pump more product, increasing plant productivity!

## Air Consumption SCFM



	WILDEN PS	YAMADA NDP SERIES	% LESS AIR CONSUMED
<b>DATA POINTS</b>	<b>SIZE: 38 mm (1-1/2")</b>	<b>SIZE: 38 mm (1-1/2")</b>	
70 GPM @ 40 psi	48	85	44%
30 gpm @ 80 psi	30	61	51%
<b>DATA POINTS</b>	<b>SIZE: 51 mm (2")</b>	<b>SIZE: 51 mm (2")</b>	
140 gpm @ 10 psi	68	130	48%
70 gpm @ 40 psi	40	55	27%
<b>DATA POINTS</b>	<b>SIZE: 76 mm (3")</b>	<b>SIZE: 76 mm (3")</b>	
140 gpm @ 60 psi	122	138	12%
60 gpm @ 80 psi	55	89	38%

**BENEFITS:** Wilden PS pumps require less air to power the pump – increasing energy savings and plant productivity!  
NOTE: Air supply pressure varies between pumps to meet gpm requirements.

## ANNUAL OPERATING COST\* (USD)



	WILDEN PS	YAMADA NDP SERIES	WILDEN ANNUAL SAVINGS
<b>DATA POINTS</b>	<b>SIZE: 38 mm (1-1/2")</b>	<b>SIZE: 38 mm (1-1/2")</b>	
70 gpm @ 40 psi	\$1,410	\$2,496	\$1,086
30 gpm @ 80 psi	\$1,010	\$2,054	\$1,044
<b>DATA POINTS</b>	<b>SIZE: 51 mm (2")</b>	<b>SIZE: 51 mm (2")</b>	
140 gpm @ 10 psi	\$1,965	\$3,757	\$1,792
70 gpm @ 40 psi	\$1,047	\$1,440	\$393
<b>DATA POINTS</b>	<b>SIZE: 76 mm (3")</b>	<b>SIZE: 76 mm (3")</b>	
140 gpm @ 60 psi	\$4,108	\$4,647	\$539
60 gpm @ 80 psi	\$1,830	\$2,961	\$1,131

\*Assumptions: Annual Operating Cost (USD) is calculated assuming that the pumps are operating at 8 hours a day, 5 days a week, totaling to 2,080 hours of operation per year at 10 cents per kilowatt hour. Air supply pressure, per published performance curves, averaged between Wilden and Yamada for cost calculation.  
NOTE: All information gathered and represented is published Yamada performance data found in Yamada NDP Series Manuals. Yamada® Pumps is a registered trademark of the Yamada Corporation.



Order Online

## WILDEN®

PSG

22069 Van Buren Street, Grand Terrace, CA 92313-5651

P: +1 (909) 422-1730 • F: +1 (909) 783-3440

wildenpump.com

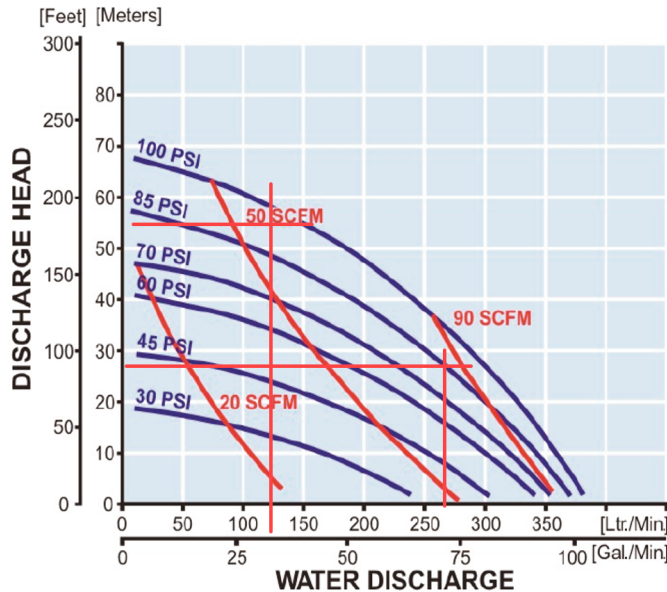
Authorized PSG® Partner:



# COMPARISON CENTRAL: WILDEN vs. YAMADA

## NPD-40 (1.5") Bolted Metal Pump

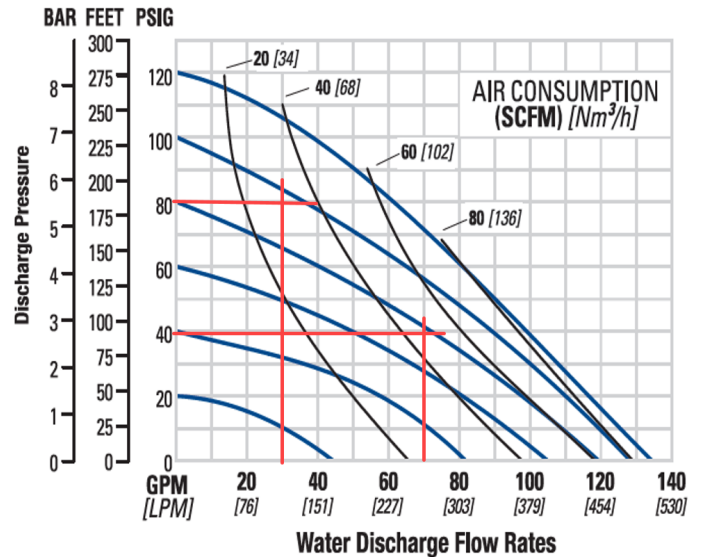
Diaphragm: Rubber



All information gathered and represented is published Yamada performance data found in the Yamada Product Specification Guide. Yamada® Pumps is a registered trademark of the Yamada Corporation. <https://www.yamadapump.com/>

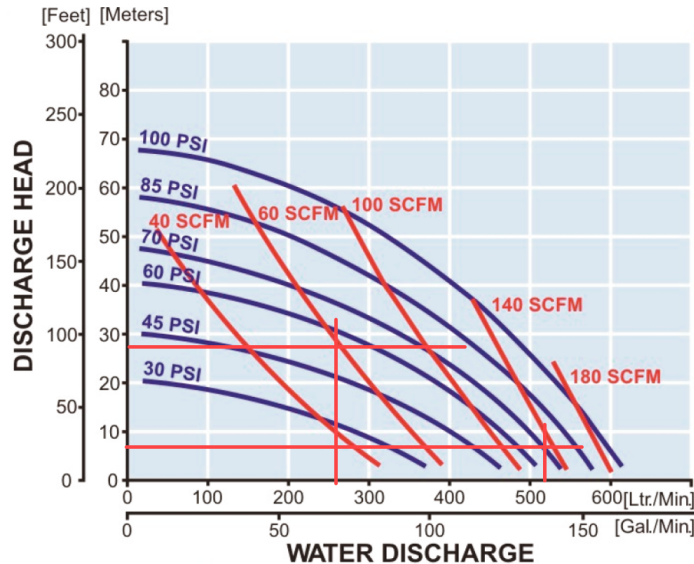
## PS420/430 (1.5") Bolted Metal Pump

Diaphragm: EZ-Install TPE



## NPD-50 (2") Bolted Metal Pump

Diaphragm: Rubber

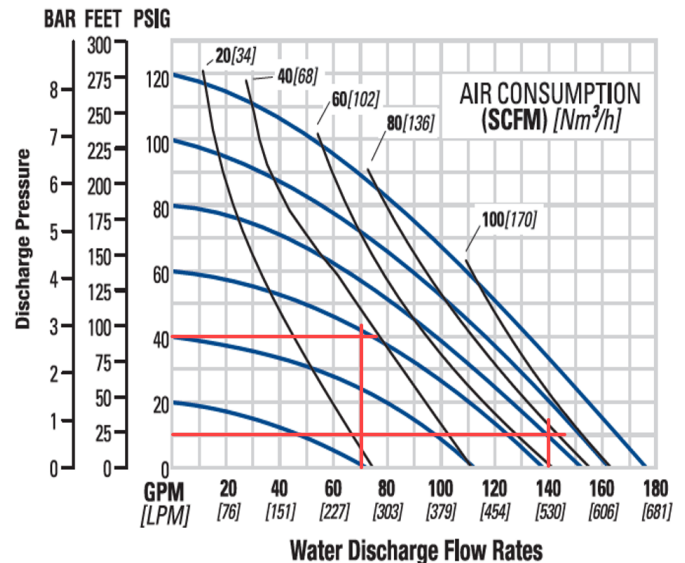


Data based on 1-ft. flooded suction, ambient water

All information gathered and represented is published Yamada performance data found in the Yamada Product Specification Guide. Yamada® Pumps is a registered trademark of the Yamada Corporation. <https://www.yamadapump.com/>

## PS820/830 (2") Bolted Metal Pump

Diaphragm: EZ-Install TPE



Order Online

# WILDEN®

PSG

22069 Van Buren Street, Grand Terrace, CA 92313-5651

P: +1 (909) 422-1730 • F: +1 (909) 783-3440

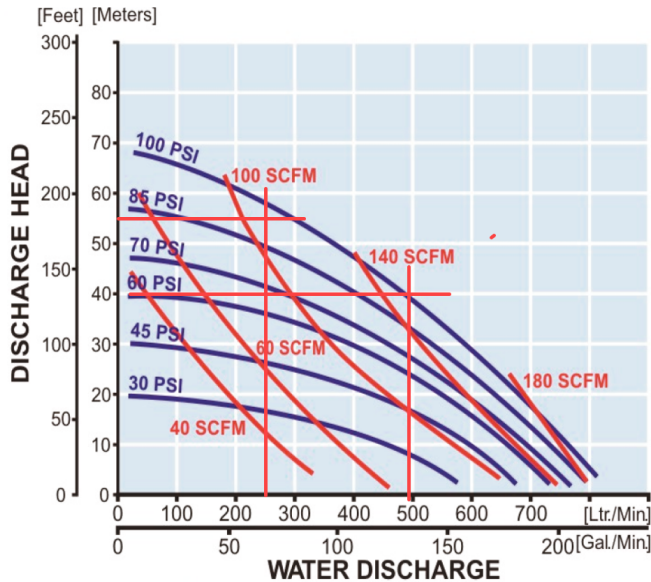
[wildenpump.com](http://wildenpump.com)

Authorized PSG® Partner:

# COMPARISON CENTRAL: WILDEN vs. YAMADA

## NPD-80 (3") Yamada Bolted Metal Pump

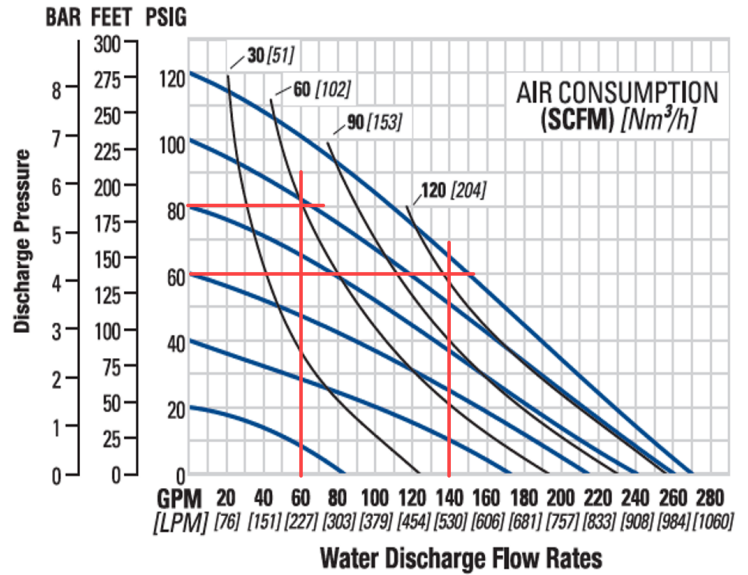
Diaphragm: Rubber



All information gathered and represented is published Yamada performance data found in the Yamada Product Specification Guide. Yamada® Pumps is a registered trademark of the Yamada Corporation. <https://www.yamadapump.com/>

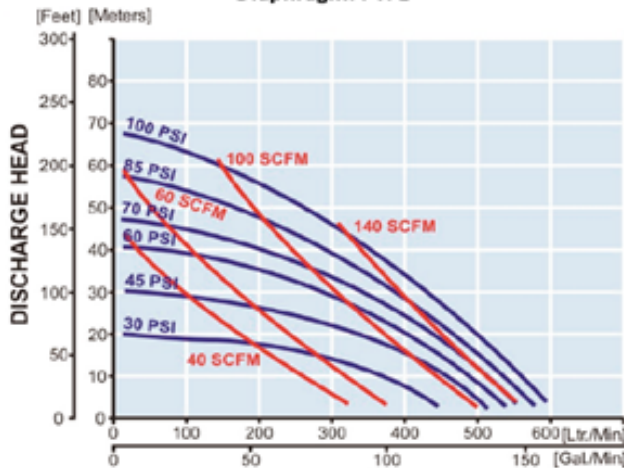
## PS 1520/1530 (3") Bolted Metal Pump

Diaphragm: EZ-Install TPE



## NPD-80 (3") Yamada Bolted Metal Pump

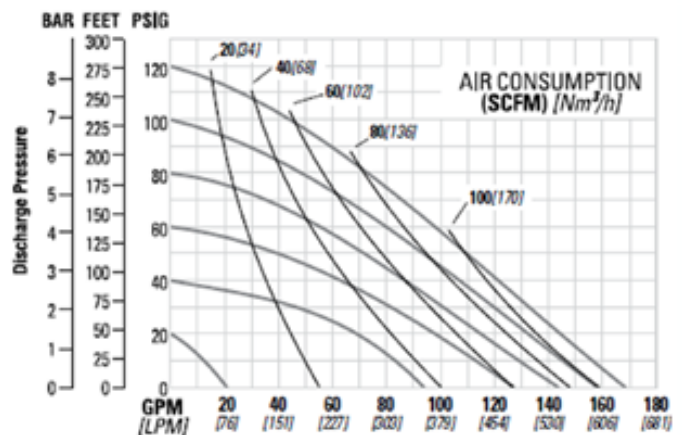
Diaphragm: PTFE



Max Flow Rate: 160 GPM  
List Price: \$3,550

## PS820/830 (2") Bolted Metal Pump

Diaphragm: PTFE



Max Flow Rate: 178 GPM  
List Price: \$2,737

All information gathered and represented is published Yamada performance data found in the Yamada Product Specification Guide. Yamada® Pumps is a registered trademark of the Yamada Corporation. <https://www.yamadapump.com/>



Order Online

# WILDEN®

PSG

22069 Van Buren Street, Grand Terrace, CA 92313-5651

P: +1 (909) 422-1730 • F: +1 (909) 783-3440

[wildenpump.com](http://wildenpump.com)

Authorized PSG® Partner: